



August 1995

The Labour Force

New South Wales and Australian Capital Territory

Statistics

EMBARGOED UNTIL 11.30 A.M. 24 NOVEMBER 1995

**THE LABOUR FORCE
NEW SOUTH WALES AND AUSTRALIAN CAPITAL TERRITORY
AUGUST 1995**

**Gregory W. Bray
Deputy Commonwealth Statistician**

AUSTRALIAN BUREAU OF STATISTICS

CATALOGUE NO. 6201.1

© Commonwealth of Australia 1995

Produced by the Australian Government Publishing Service

CONTENTS

		Page
	What if . . . ? Revisions to trend estimates	vi
SUMMARY OF FINDINGS	New South Wales	1
	Australian Capital Territory	5
Graphs	Employed persons, NSW, August 1983 – August 1995	1
	Unemployment rate, NSW and Australia, August 1983 – August 1995	1
	Unemployment rate, Regions of NSW, August 1995	3
	Average duration of unemployment, NSW, August 1993 – August 1995	4
	Employed persons, ACT, August 1983 – August 1995	5
	Unemployment rate, ACT and Australia, August 1983 – August 1995	5
	Unemployment rate by age, ACT, August 1993 – August 1995	6
	Average duration of unemployment, ACT, August 1993 – August 1995	6
NEW SOUTH WALES		
LABOUR FORCE STATUS		
Tables	Labour force status, NSW—	
	1 Original series	9
	2 Seasonally adjusted and trend series	10
	3 Age	12
	4 Aged 15–24 (single years) by full-time educational attendance	13
	5 Family status	14
Graphs	Trend series, NSW, August 1983 – August 1995—	
	Employed males	11
	Employed females	11
	Unemployed males	11
	Unemployed females	11
	Male unemployment rate	11
	Female unemployment rate	11
	Male participation rate	11
	Female participation rate	11
	Persons aged 15–19 in the labour force, NSW:	
	Full-time attendance at school or a tertiary educational institution, August 1993 – August 1995—	
	Employed	12
	Unemployed	12

EMPLOYED PERSONS

Tables

Employed persons, NSW—

6 Status in employment 14**7** Age 15**8** Industry 16**9** Occupation 18

Graphs

Annual change in employment by age, NSW,
August 1994 – August 1995 15

Employment by industry division, NSW, August 1995 17

Annual change in employment by occupation group, NSW,
August 1994 – August 1995 19

UNEMPLOYED PERSONS

Tables

Unemployed persons, NSW—

10 Age 20**11** Unemployment rate by age 20**12** Industry and occupation of last full-time job 21**13** Duration of unemployment 22**14** Unemployment rate by birthplace and period of arrival 22**15** Duration of unemployment by age 23

Graphs

Unemployment rate by age, NSW, August 1993 – August 1995 21

Unemployment rate by period of arrival of overseas born,
NSW, August 1995 22

REGIONAL DATA

Tables

Labour force status—

16 Sydney Major Statistical Region 24**17** Balance of NSW Major Statistical Region 25**18** Regions of NSW 26

Employed persons—

19 Industry and occupation, Sydney Major Statistical Region and
Balance of NSW Major Statistical Region 34

**AUSTRALIAN CAPITAL
TERRITORY**
LABOUR FORCE STATUS

Tables	Labour force status, ACT—	
	20 Original series	35
	21 Trend series	36
	22 Age	38
	23 Non-institutionalised persons: Birthplace and year of arrival	38
Graphs	Trend series, ACT, August 1983 – August 1995—	
	Employed males	37
	Employed females	37
	Unemployed males	37
	Unemployed females	37
	Male unemployment rate	37
	Female unemployment rate	37
	Male participation rate	37
	Female participation rate	37

EMPLOYED PERSONS

Table	24 Employed persons, industry and occupation, ACT	39
Graph	Employment by industry division, ACT, August 1995	39

UNEMPLOYED PERSONS

Table	25 Long-term unemployment, ACT	40
Graph	Long-term unemployed as a proportion of total unemployed, ACT, August 1993 – August 1995	40

GENERAL INFORMATION

	Labour force supplementary topics	41
	Explanatory notes	42
	Technical note on data reliability	47

APPENDIX

	Regions of NSW and their statistical local areas	53
--	--	----

MAPS

	Regions of NSW	57
	Regions of Sydney Major Statistical Region	57

INQUIRIES

- *for further information about statistics in this publication and the availability of related unpublished statistics, contact the following—*
 ABS NSW office — Valda McSorley on Sydney (02) 268 4386 or
 Client Services Statistical Support on Sydney (02) 268 4398
 ABS ACT office — Tim Power on Canberra (06) 207 0244
- *for information about other ABS statistics and services please refer to the last page of this publication.*

WHAT IF . . . ? REVISIONS TO TREND ESTIMATES

EFFECT OF NEW SEASONALLY ADJUSTED ESTIMATES ON TREND ESTIMATES

Each time new seasonally adjusted estimates become available, trend estimates are revised (see paragraph 28 of the Explanatory Notes).

Generally it is only the last three trend estimates that are subject to noticeable degrees of revision, with the last estimate experiencing the greatest revision. An analysis of how sensitive the current trend estimates are to additional data can be helpful.

Some scenarios that may be considered in a 'what if' analysis include:

- What revision would happen to the current trend point if next month's seasonally adjusted figure grew (or fell) by a typical amount, for example the average monthly percentage growth (or fall)?
- What value must next month's seasonally adjusted figure be to result in zero trend growth between the current trend value (when revised) and next month's trend estimate?

An example of such an analysis for trend estimates of employment and unemployment rate for Australia can be found in the monthly publication *The Labour Force, Australia, Preliminary* (6202.0).

NEW SPECIAL DATA SERVICE

Now available are 'What if?' analyses of the effect of new seasonally adjusted estimates on trend estimates for:

- Employment NSW
- Unemployment rate NSW
- Employment ACT
- Unemployment rate ACT.

This analysis is available on a monthly basis as a special data service. For details of this new product, please contact Valda McSorley, Social and Labour Statistics Unit, ABS on Sydney (02) 268 4386.

For further information on trend revisions, contact the Assistant Director, Time Series Analysis, ABS on Canberra (06) 252 6345.

SUMMARY OF FINDINGS NEW SOUTH WALES

TREND ESTIMATES

The trend estimate of **employed** people in NSW has been increasing since March 1993 and in August 1995 stood at 2 766 500. This was 9.1% higher than the March 1993 trough.

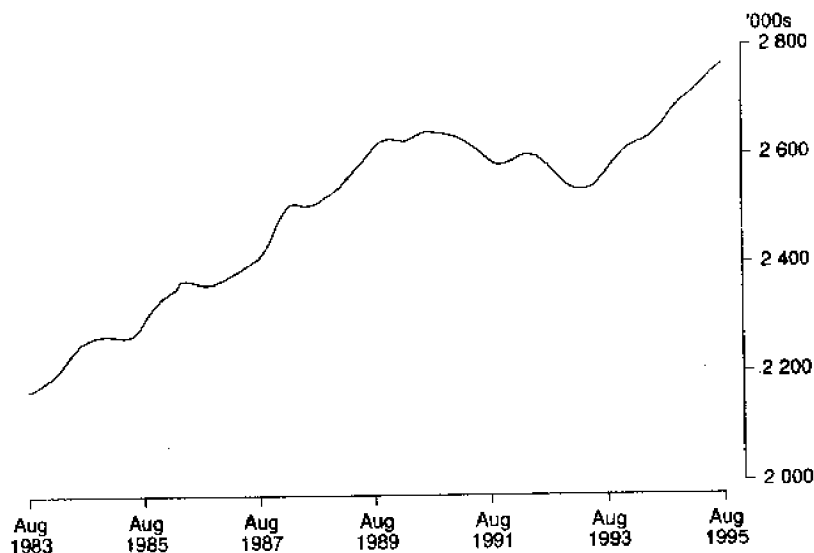
The trend estimate of **unemployed** people reached a peak of 315 400 in January 1993 and has been generally falling since then. In August 1995 the trend estimate was 224 400 (29% below the January 1993 peak).

The trend **unemployment rate** reached a peak of 11.0% in the period December 1992 to March 1993 and has been falling since then. In August 1995 the rate was 7.5%, the lowest since December 1990.

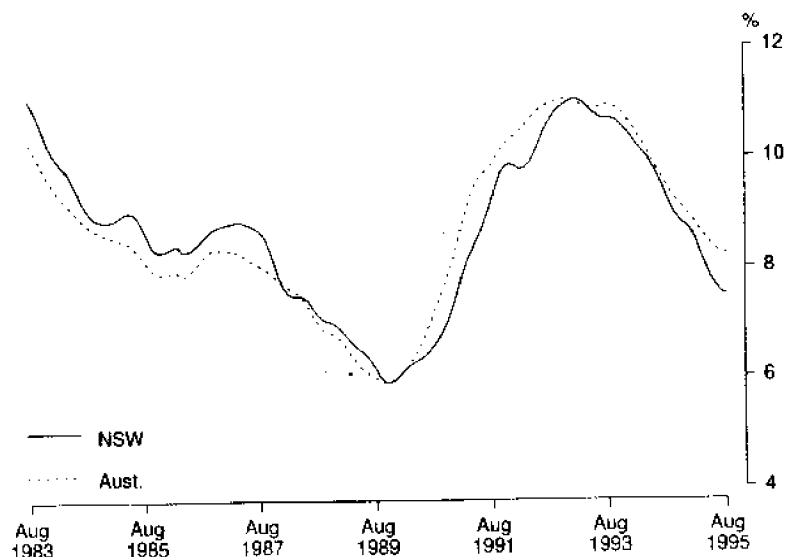
The trend series **participation rate** was 62.2% in August 1995 compared to 61.7% in August 1994.

The **labour force** trend estimate has been rising since April 1993 and in August 1995 was 2 991 000 (5.0% above the April 1993 trough).

EMPLOYED PERSONS, NSW
Trend



UNEMPLOYMENT RATE
Trend



SEASONALLY ADJUSTED ESTIMATES

Employment stood at 2 765 900 in NSW in August 1995. This was 117 200 (4.4%) higher than a year ago.

The number of **unemployed** people was estimated at 235 000 in August 1995. This was 6.6% higher than in July but 29 500 (11.2%) lower than a year ago. Males represented 59% of the unemployed this August, the same as a year ago.

The **unemployment rate** rose from 7.4% in July 1995 to 7.8% in August. This compared to a rate of 9.1% in August of last year. The rate was 8.0% for males and 7.6% for females in August 1995.

The **participation rate** stood at 62.4% in August, with a rate of 72.7% for males and 52.5% for females.

In August 1995 the size of the **labour force** was estimated at 3 001 000 people. This was 3.0% higher than a year ago.

LABOUR FORCE, NSW: TREND AND SEASONALLY ADJUSTED ESTIMATES

	<i>Labour force</i>			
	<i>Employed</i>	<i>Unemployed</i>	<i>Unemployment rate</i>	<i>Participation rate</i>
	'000s	'000s	%	%
TREND				
1995—				
May	2 742.1	232.8	7.8	62.1
June	2 751.3	228.6	7.7	62.1
July	2 759.5	225.9	7.6	62.2
August	2 766.5	224.4	7.5	62.2
SEASONALLY ADJUSTED				
1995—				
May	2 732.0	235.0	7.9	61.9
June	2 770.3	225.4	7.5	62.4
July	2 755.4	220.6	7.4	62.0
August	2 765.9	235.0	7.8	62.4

REGIONS OF NSW

While the Labour Force Survey is designed primarily to produce reliable estimates at the national and State/Territory level, it also delivers estimates for a number of regions within States. As with national and State estimates, regional labour force estimates are subject to sampling error. Since estimates for regions are components of corresponding estimates at the State level — and are thus based on a considerably smaller sample size — they are subject to higher relative standard errors. Care should therefore be taken in interpretation of regional estimates, particularly month to month movements. Tables of standard errors are included in the Technical Note on page 47–52 of this publication.

Sydney

In August 1995 the estimate of the number of people **employed** in the Sydney Major Statistical Region (MSR) was 1 778 300. This was 1.1% lower than the previous month but 1.8% higher than in August 1994.

The **unemployment rate** was 6.9% in August 1995 compared to 7.7% last August. The rate was 7.3% for males and 6.5% for females.

The unemployment rates within Sydney MSR varied from 15.8% in Fairfield–Liverpool Statistical Region (SR) to 2.8% in St George–Sutherland SR.

The **participation rate** for Sydney MSR was 63.3% overall with a rate of 73.4% for males and 53.7% for females. Rates varied from 50.0% in Gosford-Wyong SR to 69.6% in Outer Western Sydney SR.

Balance of NSW

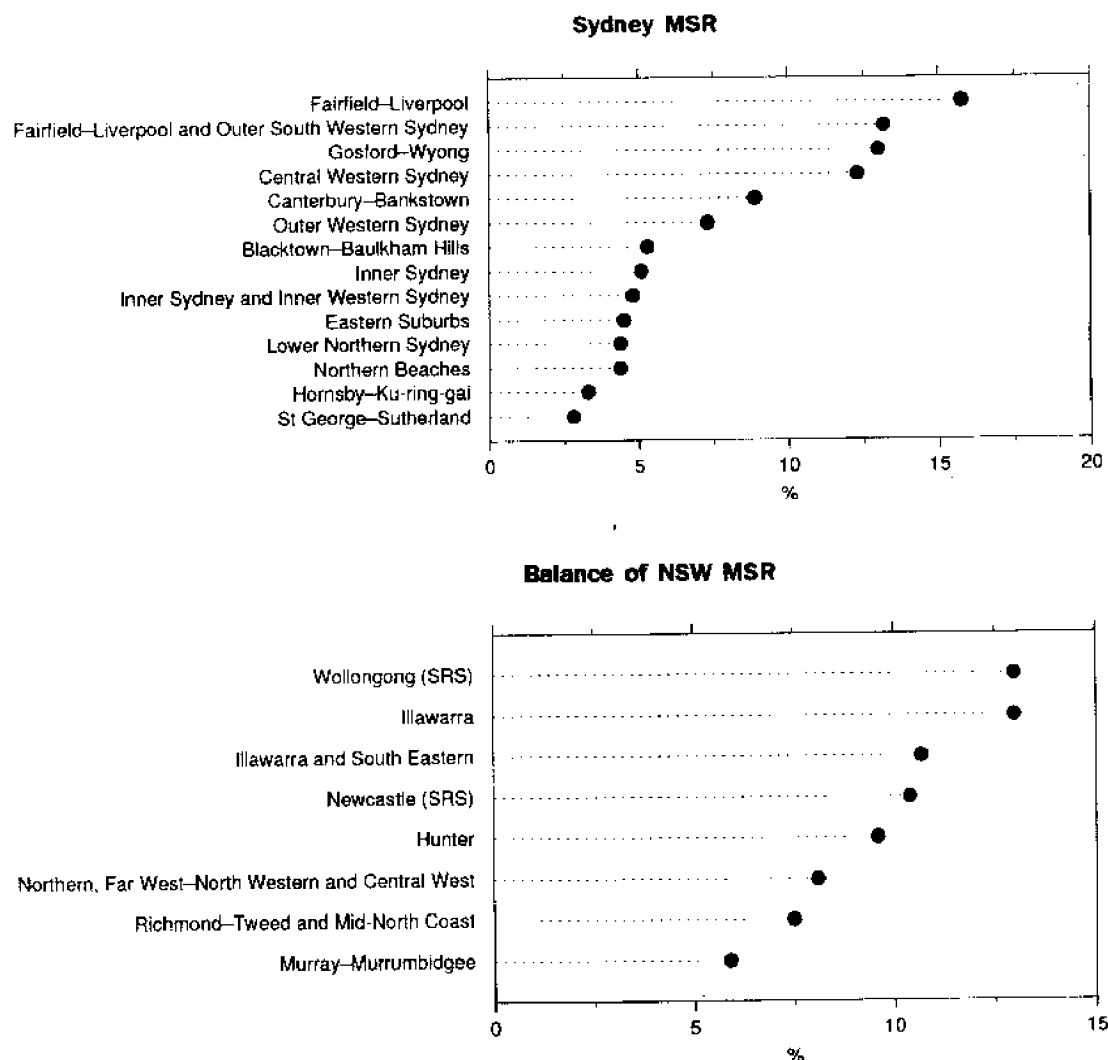
The number of **employed** people in this area of NSW has been steady in the last three months and in August was 973 200. This was an increase of 9.6% over the past year. Part-time workers accounted for about half this increase.

The **unemployment rate** in August was 8.8% compared to 8.0% in July and 11.0% in August last year.

The unemployment rate varied from 5.9% in Murray-Murrumbidgee SR to 13.0% in Illawarra SR and Wollongong SRS.

The **participation rate** for the Balance of NSW MSR was 59.6% in August 1995. The rate was 70.2% for males and 49.4% for females.

UNEMPLOYMENT RATE, REGIONS OF NSW, AUGUST 1995



AGE

Most unemployment rates by age group, having fallen during the year, showed an increase in August. The exceptions were the 45-54 year olds where the rate has been steady in the last quarter and the 55 years and over group where the rate has continued to fall in recent months.

In August 1995 the rates were highest for 15–19 year olds (19.2%) and 20–24 year olds (10.7%) and lowest for 45–54 year olds (4.3%). The 15–19 unemployment rate was the same as 12 months ago while the 20–24 rate decreased from 12.8%.

Part-time workers represented an estimated 23% of all employed people in August 1995, but this proportion varied between the age groups. The highest levels were among those aged 15–19 years with 60% and those aged 65 years and over with 52%. An estimated 34% of 15–19 year olds were looking for part-time work.

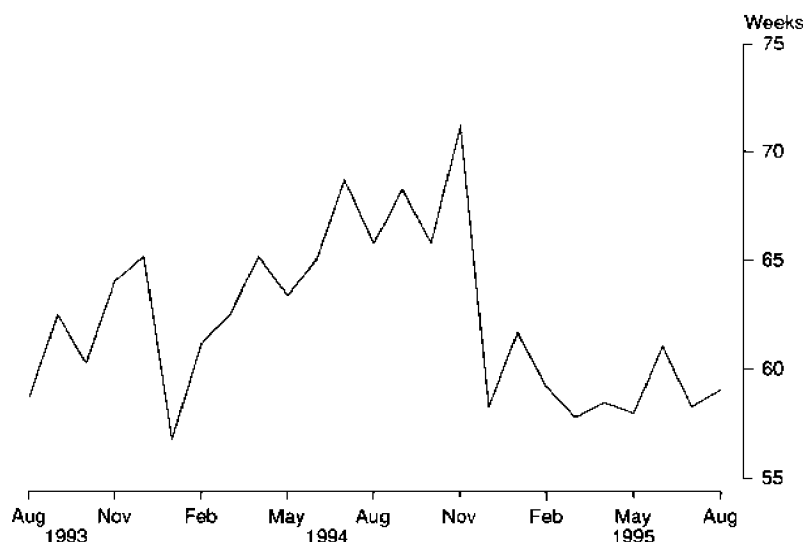
DURATION OF UNEMPLOYMENT

In August 1995 the **long term unemployed** (people unemployed 52 weeks and over) represented 34% of all unemployed people. This compared with 39% a year earlier.

The average duration of unemployment was 59 weeks in August 1995 compared to 66 weeks the previous August.

Average duration of unemployment increased with age reaching an average of 99 weeks for people aged 45 years and over.

AVERAGE DURATION OF UNEMPLOYMENT, NSW



INDUSTRY AND OCCUPATION

The industries with the largest number of employees in NSW in August 1995 were *Retail trade* with 386 100 (or 14% of the total) and *Manufacturing* with 367 700 (13%).

Manufacturing employed the largest number of people in Sydney MSR with 14% of the total while *Retail trade* had the largest number in Balance of NSW MSR with 15%.

The largest occupation group in NSW was *Clerks* with 488 900 employees (18% of the total) followed by *Salespersons and personal service workers* (17%). *Clerks* were also the largest occupation group in Sydney MSR with 20% of the total while *Labourers and related workers* were the largest group in Balance of NSW MSR with 18%.

Between August 1994 and August 1995, the majority of occupation groups showed increases in employment. The largest increase occurred in *Salespersons and personal service workers* (13%).

SUMMARY OF FINDINGS AUSTRALIAN CAPITAL TERRITORY

Note: Seasonally adjusted estimates are not available for the ACT.

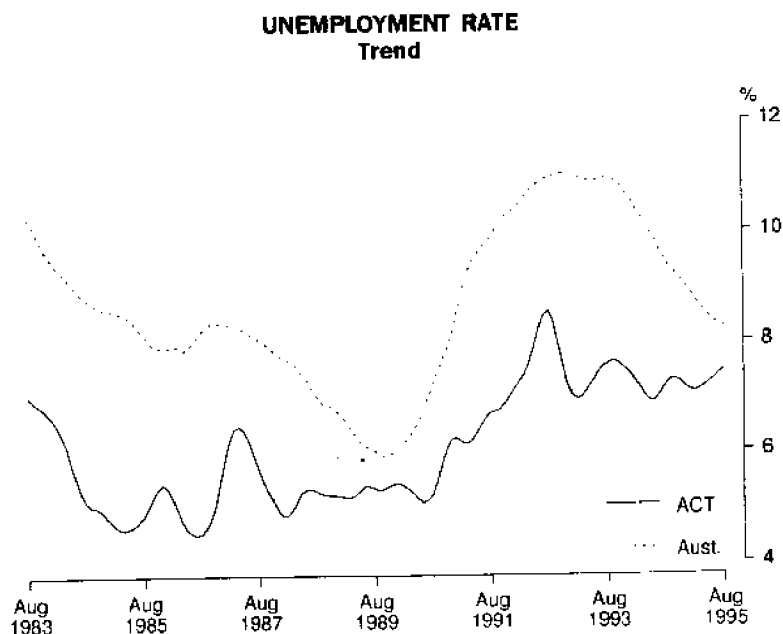
TREND ESTIMATES

The trend estimate of the number of **employed** people in the ACT has been increasing in the six months since February 1995 and in August was 158 500. This was the highest level that this series had reached and was 3.2% above the February figure.



Unemployment in the ACT has been increasing slowly since March 1995 and was estimated at 12 800 in August. The highest unemployment level of 13 500 occurred in the ACT in August 1992.

The trend **unemployment rate** has shown a small rise in 1995 and stood at 7.5% in August. The highest unemployment rate of 8.5% occurred in the ACT in July–August 1992. The unemployment rate was 8.6% for males and 6.1% for females in August 1995.



The **participation** rate has been increasing since March 1995 and in August was 74.2%, the highest figure on record. This was 2.1 percentage points above the level in March. The ACT **labour force** estimate was 171 300 in August.

AGE

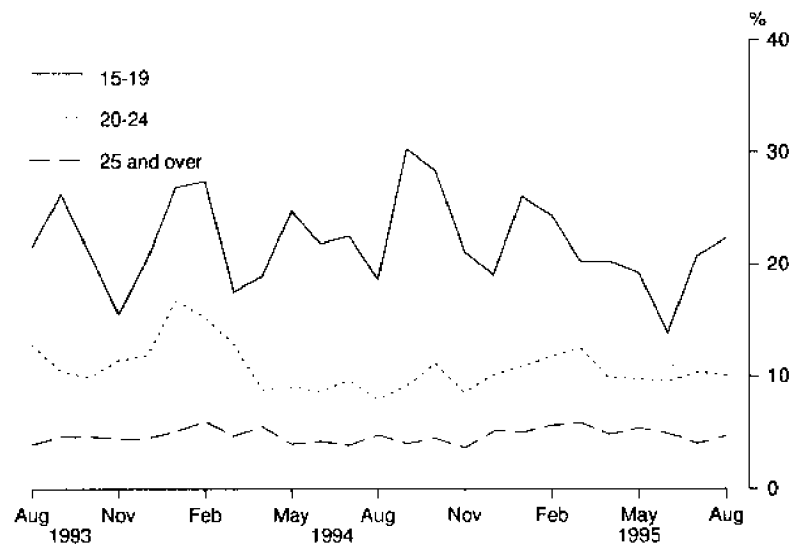
In August 1995 the unemployment rate in the ACT was highest (22.4%) for people aged 15–19 years. The rate was 10.1% for people aged 20–24 years and 4.7% for those aged 25 years and over.

About four-fifths of 15–19 year olds were working part-time, while approximately half of the unemployed in this age group were looking for part-time work. 15–19 year olds worked an average of 17 hours per week.

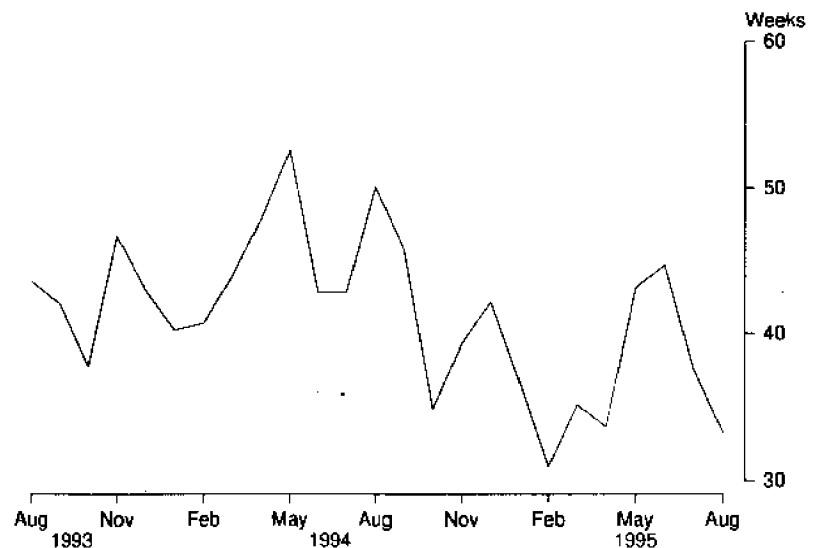
Approximately 70% of employed 20–24 year olds and 80% of people aged 25 years and over worked full-time. On average 20–24 year olds worked 32 hours per week and those aged 25 years and over worked 37 hours per week.

The highest participation rate was 85.4% for those aged 20–24 years and the lowest was 63.3% for those aged 15–19 years.

UNEMPLOYMENT RATE BY AGE, ACT



AVERAGE DURATION OF UNEMPLOYMENT, ACT



DURATION OF
UNEMPLOYMENT

In August 1995 the average duration of unemployment in the ACT was 33 weeks. The highest average was for people aged 25 years and over (43 weeks) and the lowest (19 weeks) for 15-19 year olds.

The **long term unemployed** (people unemployed 52 weeks and over) represented 21% of all unemployed people in August 1995. This was lower than a year ago when it was 33%.

INDUSTRY AND OCCUPATION

In August 1995, about a quarter of all employed people in the ACT were employed in *Government administration and defence* and a further 14% were in *Retail trade*.

Of all employed females, 23% worked in *Government administration and defence*, 15% worked in *Health and community services* and 14% in *Retail trade*.

The largest occupation groups were *Clerks* and *Professionals* both with 21% of employed people. *Professionals* were the largest group for males with 22% and *Clerks* the largest group for females with 35%.

NOTE

This publication contains estimates of the civilian labour force in NSW and the ACT derived from the Labour Force Survey component of the Monthly Population Survey, which is conducted on a sample basis throughout Australia.

Explanatory notes for the data contained within this publication can be found on Page 42.

Care should be taken in the interpretation of month-to-month movements in estimates. Survey estimates are subject to sampling and non-sampling variability as explained in the Technical note on Data Reliability on page 47.

Gregory W. Bray
Deputy Commonwealth Statistician

TABLE 1. LABOUR FORCE STATUS: ORIGINAL SERIES, NSW

Month	Employed		Total (^{'000})	Unemployed		Total (^{'000})	Labour force (^{'000})	Not in labour force (^{'000})	Civilian population aged 15 and over (^{'000})	Unemp- loyment rate (per cent)	Partici- pation rate (per cent)
	Full-time workers (^{'000})	Part-time workers (^{'000})		Looking for full- time work (^{'000})	Looking for part- time work (^{'000})						
MALES											
August 1991	1,384.7	128.2	1,512.9	147.0	11.3	158.3	1,671.2	595.6	2,266.8	9.5	73.7
1992	1,334.4	146.5	1,480.9	175.6	14.1	189.7	1,670.6	619.7	2,290.3	11.4	72.9
1993	1,315.7	137.2	1,453.0	173.0	16.3	189.4	1,642.3	667.9	2,310.2	11.5	71.1
1994—											
June	1,345.3	163.8	1,509.1	156.1	13.7	169.8	1,678.9	650.1	2,329.0	10.1	72.1
July	1,367.3	161.5	1,528.8	142.4	12.8	155.2	1,684.0	647.0	2,331.0	9.2	72.2
August	1,346.4	173.4	1,519.8	141.4	12.4	153.8	1,673.6	659.4	2,333.0	9.2	71.7
1995—											
May	1,405.7	168.0	1,573.6	123.2	14.2	137.4	1,711.0	643.6	2,354.6	8.0	72.7
June	1,411.4	164.0	1,575.4	122.1	12.0	134.2	1,709.6	647.6	2,357.2	7.8	72.5
July	1,430.7	151.2	1,582.0	117.3	13.6	131.0	1,713.0	646.4	2,359.4	7.6	72.6
August	1,403.0	167.7	1,570.8	122.3	12.2	134.5	1,705.2	656.3	2,361.6	7.9	72.2
MARRIED FEMALES											
August— 1991	366.3	286.5	652.8	25.8	12.2	38.0	690.8	662.4	1,353.2	5.5	51.0
1992	349.9	313.3	663.3	29.1	12.6	41.8	705.0	648.0	1,353.1	5.9	52.1
1993	358.1	297.0	655.1	30.7	14.7	45.5	700.6	640.5	1,341.1	6.5	52.2
1994—											
June	396.5	291.2	687.7	33.7	13.0	46.7	734.4	663.0	1,397.4	6.4	52.6
July	397.3	286.7	683.9	31.6	13.1	44.7	728.6	649.5	1,378.1	6.1	52.9
August	385.3	292.3	677.6	26.4	12.0	38.4	716.0	667.5	1,383.5	5.4	51.8
1995—											
May	397.5	315.9	713.4	19.4	13.3	32.7	746.1	665.9	1,412.0	4.4	52.8
June	406.0	332.7	738.7	23.9	11.2	35.1	773.7	646.6	1,420.3	4.5	54.5
July	410.8	322.6	733.4	21.0	8.7	29.7	763.1	645.2	1,408.3	3.9	54.2
August	410.1	311.5	721.6	25.3	11.8	37.1	758.7	641.0	1,399.7	4.9	54.2
ALL FEMALES											
August— 1991	668.7	407.7	1,076.4	69.4	27.6	96.9	1,173.4	1,171.3	2,344.7	8.3	50.0
1992	638.9	453.0	1,091.9	82.4	31.2	113.6	1,205.5	1,165.0	2,370.5	9.4	50.9
1993	654.3	437.5	1,091.8	78.8	30.5	109.3	1,201.1	1,191.5	2,392.6	9.1	50.2
1994—											
June	685.7	440.6	1,126.3	79.7	31.6	111.3	1,237.6	1,175.9	2,413.5	9.0	51.3
July	696.4	441.1	1,137.6	81.1	30.4	111.5	1,249.1	1,166.7	2,415.8	8.9	51.7
August	676.3	438.3	1,114.6	74.8	26.5	101.4	1,215.9	1,202.1	2,418.0	8.3	50.3
1995—											
May	698.6	474.4	1,172.9	58.0	31.2	89.2	1,262.1	1,175.7	2,437.8	7.1	51.8
June	706.8	486.7	1,193.5	58.9	25.9	84.8	1,278.3	1,161.9	2,440.2	6.6	52.4
July	714.0	474.4	1,188.4	59.1	21.1	80.2	1,268.6	1,173.9	2,442.5	6.3	51.9
August	708.8	471.9	1,180.7	59.8	32.4	92.2	1,272.9	1,171.8	2,444.7	7.2	52.1
PERSONS											
August— 1991	2,053.4	535.9	2,589.4	216.3	38.9	255.2	2,844.5	1,766.9	4,611.4	9.0	61.7
1992	1,973.3	599.5	2,572.8	258.0	45.3	303.3	2,876.1	1,784.7	4,660.8	10.5	61.7
1993	1,970.1	574.7	2,544.8	251.8	46.9	298.7	2,843.5	1,859.4	4,702.9	10.5	60.5
1994—											
June	2,031.0	604.3	2,635.4	235.8	45.3	281.1	2,916.5	1,826.0	4,742.4	9.6	61.5
July	2,063.7	602.7	2,666.4	223.5	43.2	266.7	2,933.1	1,813.7	4,746.8	9.1	61.8
August	2,022.7	611.7	2,634.4	216.2	38.9	255.1	2,889.5	1,861.6	4,751.1	8.8	60.8
1995—											
May	2,104.2	642.3	2,746.5	181.2	45.4	226.6	2,973.1	1,819.3	4,792.4	7.6	62.0
June	2,118.3	650.7	2,769.0	181.0	38.0	219.0	2,988.0	1,809.5	4,797.4	7.3	62.3
July	2,144.7	625.7	2,770.4	176.4	34.7	211.1	2,981.5	1,820.3	4,801.8	7.1	62.1
August	2,111.8	639.6	2,751.5	182.1	44.6	226.6	2,978.1	1,828.2	4,806.3	7.6	62.0

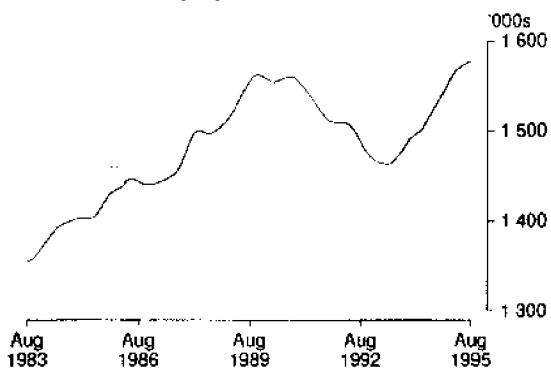
TABLE 2. LABOUR FORCE STATUS: SEASONALLY ADJUSTED AND TREND SERIES, NSW

Month	Seasonally adjusted series					Trend series (a)				
	Employed ('000)	Unemp- loyed ('000)	Labour force ('000)	Unemp- loyment rate (per cent)	Partici- pation rate (per cent)	Employed ('000)	Unemp- loyed ('000)	Labour force ('000)	Unemp- loyment rate (per cent)	Partici- pation rate (per cent)
MALES										
August—										
1991	1,523.2	161.4	1,684.7	9.6	74.3	1,517.2	158.2	1,675.3	9.4	73.9
1992	1,489.9	193.6	1,683.5	11.5	73.5	1,488.1	191.1	1,679.2	11.4	73.3
1993	1,461.2	193.4	1,654.6	11.7	71.6	1,471.2	193.6	1,664.8	11.6	72.1
1994—										
June	1,512.5	172.9	1,685.4	10.3	72.4	1,513.1	170.6	1,683.7	10.1	72.3
July	1,520.9	162.1	1,683.0	9.6	72.2	1,519.3	165.6	1,684.9	9.8	72.3
August	1,527.9	157.2	1,685.1	9.3	72.2	1,525.2	161.0	1,686.1	9.5	72.3
September	1,534.1	163.0	1,697.1	9.6	72.7	1,531.1	157.3	1,688.4	9.3	72.3
October	1,536.4	150.4	1,686.8	8.9	72.2	1,537.1	154.9	1,691.9	9.2	72.4
November	1,536.3	153.1	1,689.4	9.1	72.2	1,543.3	153.0	1,696.3	9.0	72.5
December	1,547.3	150.5	1,697.8	8.9	72.5	1,549.7	151.3	1,701.0	8.9	72.7
1995—										
January	1,559.6	154.7	1,714.3	9.0	73.1	1,556.2	149.0	1,705.2	8.7	72.8
February	1,572.1	144.4	1,716.5	8.4	73.2	1,562.2	146.3	1,708.5	8.6	72.8
March	1,559.6	144.4	1,704.0	8.5	72.5	1,566.8	143.5	1,710.4	8.4	72.8
April	1,570.6	136.6	1,707.1	8.0	72.6	1,570.0	141.0	1,711.0	8.2	72.8
May	1,570.8	141.1	1,711.9	8.2	72.7	1,572.4	139.0	1,711.3	8.1	72.7
June	1,579.2	136.2	1,715.5	7.9	72.8	1,574.5	137.6	1,712.1	8.0	72.6
July	1,573.8	137.0	1,710.8	8.0	72.5	1,576.5	136.6	1,713.1	8.0	72.6
August	1,578.9	137.5	1,716.5	8.0	72.7	1,577.9	136.4	1,714.3	8.0	72.6
FEMALES										
August—										
1991	1,084.2	102.6	1,186.9	8.6	50.6	1,074.6	104.0	1,178.7	8.8	50.3
1992	1,099.1	120.4	1,219.5	9.9	51.4	1,094.7	116.7	1,211.4	9.6	51.1
1993	1,098.4	116.1	1,214.5	9.6	50.8	1,096.4	114.2	1,210.6	9.4	50.6
1994—										
June	1,124.0	116.9	1,240.9	9.4	51.4	1,127.4	113.2	1,240.6	9.1	51.4
July	1,131.0	116.2	1,247.2	9.3	51.6	1,130.4	112.3	1,242.7	9.0	51.4
August	1,120.8	107.4	1,228.2	8.7	50.8	1,135.0	110.8	1,245.9	8.9	51.5
September	1,156.6	110.0	1,266.7	8.7	52.3	1,140.8	109.3	1,250.0	8.7	51.6
October	1,143.3	106.7	1,250.0	8.5	51.6	1,146.2	108.2	1,254.4	8.6	51.8
November	1,147.5	106.4	1,253.9	8.5	51.7	1,150.1	107.9	1,258.1	8.6	51.9
December	1,156.4	108.5	1,264.9	8.6	52.1	1,152.0	107.8	1,259.8	8.6	51.9
1995—										
January	1,159.9	102.7	1,262.6	8.1	52.0	1,152.7	107.4	1,260.0	8.5	51.9
February	1,147.7	116.3	1,264.0	9.2	52.0	1,153.9	105.3	1,259.2	8.4	51.8
March	1,147.5	102.9	1,250.3	8.2	51.4	1,157.3	101.8	1,259.0	8.1	51.7
April	1,167.7	92.2	1,259.8	7.3	51.7	1,162.9	97.6	1,260.5	7.7	51.8
May	1,161.3	93.9	1,255.1	7.5	51.5	1,169.7	93.8	1,263.5	7.4	51.8
June	1,191.1	89.1	1,280.2	7.0	52.5	1,176.8	91.0	1,267.8	7.2	52.0
July	1,181.6	83.6	1,265.2	6.6	51.8	1,183.0	89.3	1,272.4	7.0	52.1
August	1,187.0	97.5	1,284.5	7.6	52.5	1,188.7	88.0	1,276.7	6.9	52.2
PERSONS										
August—										
1991	2,607.5	264.1	2,871.5	9.2	62.3	2,591.8	262.2	2,854.0	9.2	61.9
1992	2,589.0	314.1	2,903.1	10.8	62.3	2,582.9	307.8	2,890.6	10.6	62.0
1993	2,559.6	309.4	2,869.1	10.8	61.0	2,567.6	307.8	2,875.4	10.7	61.1
1994—										
June	2,636.5	289.9	2,926.4	9.9	61.7	2,640.5	283.8	2,924.3	9.7	61.7
July	2,652.0	278.3	2,930.3	9.5	61.7	2,649.7	277.9	2,927.6	9.5	61.7
August	2,648.7	264.6	2,913.3	9.1	61.3	2,660.2	271.8	2,932.0	9.3	61.7
September	2,690.7	273.1	2,963.8	9.2	62.3	2,671.9	266.6	2,938.4	9.1	61.8
October	2,679.8	257.1	2,936.8	8.8	61.7	2,683.2	263.1	2,946.3	8.9	61.9
November	2,683.8	259.5	2,943.3	8.8	61.8	2,693.4	261.0	2,954.4	8.8	62.0
December	2,703.7	259.0	2,962.7	8.7	62.1	2,701.7	259.1	2,960.8	8.8	62.1
1995—										
January	2,719.4	257.5	2,976.9	8.6	62.4	2,708.9	256.4	2,965.3	8.6	62.1
February	2,719.8	260.7	2,980.6	8.7	62.4	2,716.1	251.6	2,967.7	8.5	62.1
March	2,707.1	247.3	2,954.3	8.4	61.8	2,724.1	245.3	2,969.4	8.3	62.1
April	2,738.2	228.8	2,967.0	7.7	62.0	2,733.0	238.6	2,971.6	8.0	62.1
May	2,732.0	235.0	2,967.1	7.9	61.9	2,742.1	232.8	2,974.9	7.8	62.1
June	2,770.3	225.4	2,995.7	7.5	62.4	2,751.3	228.6	2,979.9	7.7	62.1
July	2,755.4	220.6	2,976.0	7.4	62.0	2,759.5	225.9	2,985.4	7.6	62.2
August	2,765.9	235.0	3,001.0	7.8	62.4	2,766.5	224.4	2,991.0	7.5	62.2

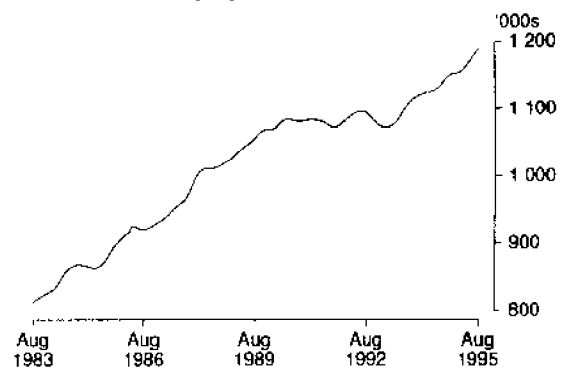
(a) See Explanatory Note 28.

TREND SERIES, NSW (a)

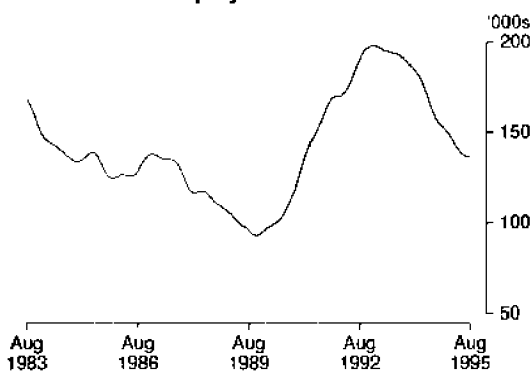
Employed males



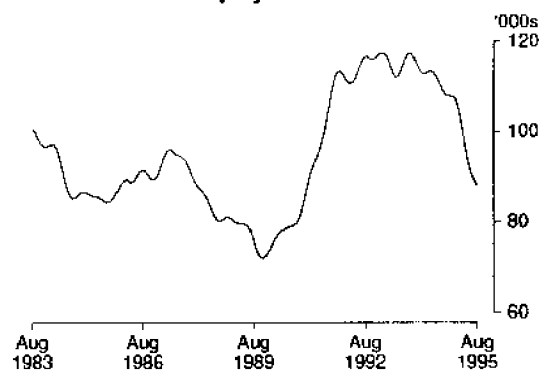
Employed females



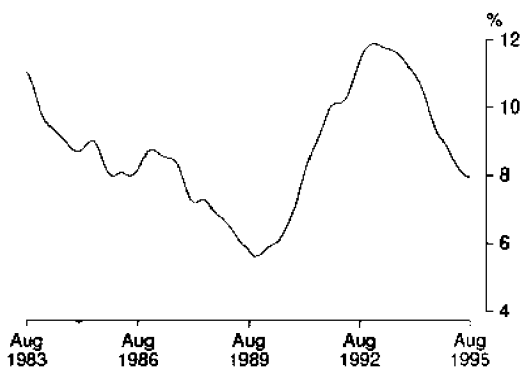
Unemployed males



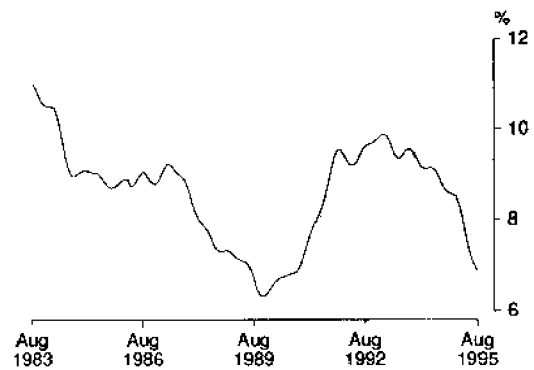
Unemployed females



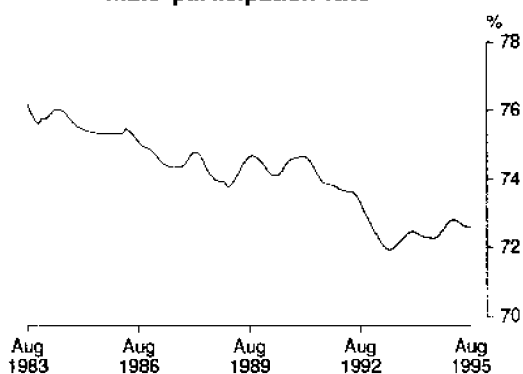
Male unemployment rate



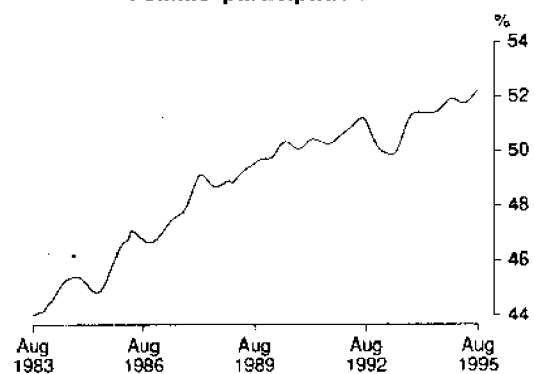
Female unemployment rate



Male participation rate



Female participation rate



(a) Comparisons between these graphs should not be made, as their vertical axes are not similarly scaled.

TABLE 3. LABOUR FORCE STATUS: AGE, NSW, AUGUST 1995

Age group (years)	Employed		Unemployed			Labour force (^{'000})	Not in labour force (^{'000})	Civilian population aged 15 and over (^{'000})	Unemp- loyment rate (per cent)	Partici- pation rate (per cent)	
	Full-time workers (^{'000})	Part-time workers (^{'000})	Total (^{'000})	Looking for full- time work (^{'000})	Looking for part- time work (^{'000})						Total (^{'000})
MALES											
15-19	46.6	43.4	90.0	17.6	6.2	23.9	113.9	100.5	214.4	21.0	53.1
20-24	156.4	30.2	186.6	20.7	* 3.0	23.6	210.3	28.9	239.2	11.2	87.9
25-34	377.1	26.0	403.1	33.9	* 0.7	34.6	437.6	36.7	474.4	7.9	92.3
35-44	373.9	24.9	398.9	25.4	* 1.3	26.7	425.5	29.9	455.5	6.3	93.4
45-54	308.8	13.0	321.8	13.7	* 0.7	14.4	336.2	49.0	385.2	4.3	87.3
55-59	87.9	8.3	96.2	6.8	* 0.3	7.1	103.3	38.7	142.0	6.9	72.8
60-64	39.2	11.4	50.6	* 4.2	* 0.0	* 4.2	54.8	66.2	121.0	* 7.7	45.3
65 and over	13.1	10.5	23.6	* 0.0	* 0.0	* 0.0	23.6	306.4	330.0	* 0.0	7.1
Total	1,403.0	167.7	1,570.8	122.3	12.2	134.5	1,705.2	656.3	2,361.6	7.9	72.2
MARRIED FEMALES											
15-19	* 1.9	* 0.9	* 2.8	* 0.8	* 0.0	* 0.8	* 3.6	* 2.4	6.0	* 22.4	* 60.5
20-24	31.8	10.6	42.4	* 4.3	* 1.0	* 5.3	47.7	18.8	66.5	* 11.1	71.8
25-34	113.3	80.5	193.7	7.5	* 3.7	11.2	204.9	115.2	320.1	5.5	64.0
35-44	129.7	111.1	240.8	8.1	* 2.9	11.0	251.8	106.3	358.0	4.4	70.3
45-54	106.0	77.2	183.2	* 3.7	* 3.1	6.8	190.0	99.7	289.7	3.6	65.6
55-59	20.9	20.8	41.8	* 0.3	* 0.8	* 1.1	42.9	58.5	101.4	* 2.6	42.3
60-64	* 4.2	7.2	11.5	* 0.6	* 0.3	* 0.9	12.4	74.2	86.6	* 7.4	14.3
65 and over	* 2.3	* 3.1	5.4	* 0.0	* 0.0	* 0.0	5.4	165.9	171.3	* 0.0	3.1
Total	410.1	311.5	721.6	25.3	11.8	37.1	758.7	641.0	1,399.7	4.9	54.2
ALL FEMALES											
15-19	27.3	66.2	93.5	11.2	8.6	19.8	113.4	90.4	203.7	17.5	55.6
20-24	116.4	41.6	158.0	11.9	6.0	17.8	175.8	57.8	233.6	10.1	75.3
25-34	198.8	101.7	300.5	15.8	6.8	22.6	323.1	153.9	477.1	7.0	67.7
35-44	178.0	128.2	306.2	13.2	5.6	18.8	325.0	135.4	460.4	5.8	70.6
45-54	146.1	90.3	236.4	6.9	* 4.0	10.8	247.2	125.9	373.1	4.4	66.3
55-59	29.6	25.0	54.6	* 0.3	* 1.1	* 1.4	56.0	82.2	138.2	* 2.5	40.5
60-64	8.6	11.0	19.6	* 0.6	* 0.3	* 0.9	20.6	102.6	123.2	* 4.5	16.7
65 and over	* 3.9	7.8	11.8	* 0.0	* 0.0	* 0.0	11.8	423.6	435.4	* 0.0	2.7
Total	708.8	471.9	1,180.7	59.8	32.4	92.2	1,272.9	1,171.8	2,444.7	7.2	52.1
PERSONS											
15-19	73.9	109.6	183.5	28.9	14.8	43.7	227.3	190.9	418.2	19.2	54.4
20-24	272.8	71.8	344.6	32.5	8.9	41.5	386.1	86.7	472.8	10.7	81.7
25-34	575.9	127.7	703.6	49.6	7.5	57.1	760.7	190.7	951.4	7.5	80.0
35-44	551.9	153.1	705.0	38.6	6.9	45.5	750.5	165.4	915.9	6.1	81.9
45-54	454.9	103.4	558.2	20.6	* 4.7	25.2	583.4	174.8	758.3	4.3	76.9
55-59	117.5	33.3	150.8	7.1	* 1.4	8.5	159.3	120.9	280.2	5.3	56.9
60-64	47.8	22.4	70.2	* 4.9	* 0.3	* 5.1	75.4	168.8	244.2	* 6.8	30.9
65 and over	17.0	18.4	35.4	* 0.0	* 0.0	* 0.0	35.4	730.0	765.4	* 0.0	4.6
Total	2,111.8	639.6	2,751.5	182.1	44.6	226.6	2,978.1	1,828.2	4,806.3	7.6	62.0

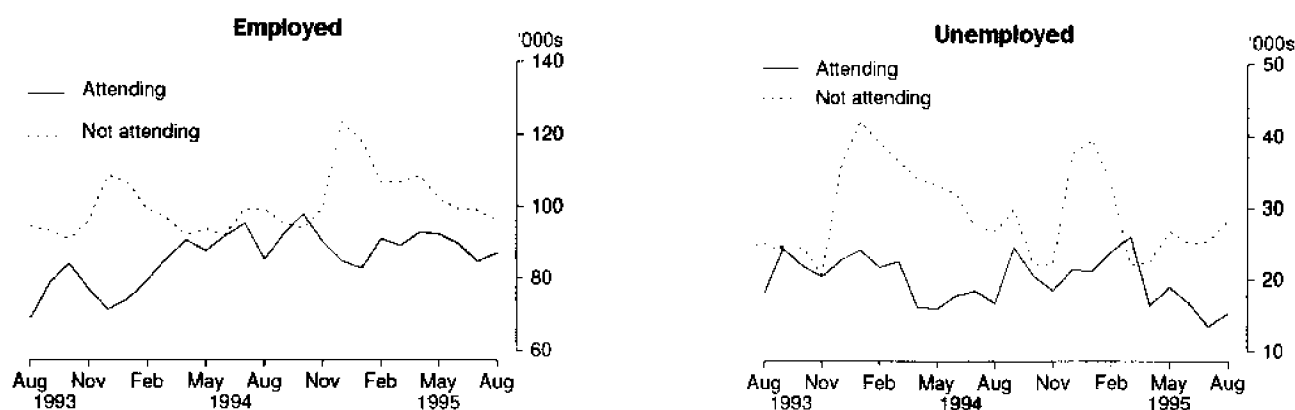
PERSONS AGED 15-19 IN THE LABOUR FORCE, NSW:
FULL-TIME ATTENDANCE AT SCHOOL OR A TERTIARY EDUCATIONAL INSTITUTION

TABLE 4. LABOUR FORCE STATUS: PERSONS AGED 15-24 BY FULL-TIME EDUCATIONAL ATTENDANCE, NSW, AUGUST 1995

Age (years)	Employed			Unemployed			Labour force ('000)	Not in labour force ('000)	Civilian population aged 15 and over ('000)	Unemployment rate (per cent)	Participation rate (per cent)
	Full-time workers ('000)	Part-time workers ('000)	Total ('000)	Looking for full-time work ('000)	Looking for part-time work ('000)	Total ('000)					
ATTENDING SCHOOL OR A TERTIARY EDUCATIONAL INSTITUTION FULL-TIME											
15-19	* 0.3	87.0	87.2	* 1.5	14.0	15.4	102.7	174.9	277.6	15.0	37.0
15	* 0.0	20.0	20.0	* 0.0	* 5.0	* 5.0	25.0	55.6	80.6	* 19.9	31.0
16	* 0.0	26.2	26.2	* 0.0	* 3.6	* 3.6	29.7	41.5	71.2	* 12.0	41.7
17	* 0.0	16.6	16.6	* 0.4	* 1.4	* 1.8	18.3	43.1	61.5	* 9.6	29.8
18	* 0.3	12.1	12.4	* 1.1	* 3.3	* 4.4	16.8	21.0	37.8	* 26.4	44.4
19	* 0.0	12.1	12.1	* 0.0	* 0.7	* 0.7	12.8	13.6	26.5	* 5.6	48.5
20-24	* 2.8	26.3	29.0	* 1.4	* 4.2	5.6	34.7	42.4	77.0	16.3	45.0
20	* 0.7	13.0	13.7	* 0.0	* 2.1	* 2.1	15.8	14.5	30.3	* 13.2	52.1
21	* 0.4	5.6	5.9	* 0.4	* 0.8	* 1.2	7.1	9.4	16.6	* 16.8	43.2
22	* 0.7	* 3.2	* 3.9	* 0.3	* 1.3	* 1.7	5.6	7.6	13.2	* 30.0	42.2
23	* 0.3	* 2.2	* 2.6	* 0.4	* 0.0	* 0.4	* 3.0	7.1	10.1	* 12.4	* 29.3
24	* 0.7	* 2.2	* 2.8	* 0.3	* 0.0	* 0.3	* 3.1	* 3.6	6.8	* 9.3	* 46.4
Total aged 15-24	* 3.0	113.2	116.3	* 2.9	18.2	21.1	137.3	217.3	354.6	15.3	38.7
NOT ATTENDING SCHOOL OR A TERTIARY EDUCATIONAL INSTITUTION FULL-TIME (a)											
15-19	73.6	22.7	96.3	27.4	* 0.9	28.3	124.6	16.0	140.6	22.7	88.6
15	* 0.7	* 0.3	* 1.0	* 1.4	* 0.0	* 1.4	* 2.4	* 0.4	* 2.8	* 58.1	* 86.8
16	* 4.1	* 2.4	6.5	* 5.2	* 0.0	* 5.2	11.7	* 0.3	11.9	* 44.4	97.7
17	12.6	* 3.3	15.9	* 5.1	* 0.0	* 5.1	21.1	* 0.7	21.8	* 24.4	96.7
18	24.2	7.7	31.9	7.5	* 0.6	8.1	40.0	5.9	46.0	20.3	87.1
19	32.0	9.0	41.0	8.2	* 0.3	8.5	49.4	8.7	58.2	17.1	85.0
20-24	270.1	45.5	315.6	31.1	* 4.8	35.8	351.4	44.3	395.8	10.2	88.8
20	38.2	8.7	46.9	* 4.2	* 1.1	* 5.3	52.2	5.6	57.8	* 10.1	90.3
21	48.8	8.8	57.6	7.5	* 1.7	9.2	66.8	7.8	74.7	13.8	89.5
22	57.4	7.1	64.5	6.4	* 0.0	6.4	70.9	9.9	80.8	9.0	87.7
23	58.3	9.7	68.0	8.8	* 2.0	10.7	78.7	10.0	88.7	13.6	88.8
24	67.5	11.2	78.7	* 4.2	* 0.0	* 4.2	82.8	11.0	93.8	* 5.1	88.3
Total aged 15-24	343.7	68.2	411.9	58.5	5.6	64.1	476.0	60.3	536.4	13.5	88.8
TOTAL											
15-19	73.9	109.6	183.5	28.9	14.8	43.7	227.3	190.9	418.2	19.2	54.4
15	* 0.7	20.3	21.0	* 1.4	* 5.0	6.4	27.4	56.0	83.4	23.2	32.9
16	* 4.1	28.5	32.6	* 5.2	* 3.6	8.7	41.4	41.8	83.2	21.1	49.8
17	12.6	19.9	32.5	5.5	* 1.4	6.9	39.4	43.8	83.3	17.5	47.3
18	24.5	19.8	44.3	8.6	* 3.9	12.5	56.8	26.9	83.8	22.1	67.9
19	32.0	21.1	53.1	8.2	* 1.0	9.2	62.2	22.4	84.6	14.8	73.6
20-24	272.8	71.8	344.6	32.5	8.9	41.5	386.1	86.7	472.8	10.7	81.7
20	38.9	21.7	60.6	* 4.2	* 3.2	7.4	68.0	20.1	88.2	10.8	77.2
21	49.1	14.4	63.5	8.0	* 2.5	10.4	74.0	17.3	91.2	14.1	81.1
22	58.0	10.4	68.4	6.7	* 1.3	8.1	76.4	17.6	94.0	10.5	81.3
23	58.6	12.0	70.6	9.1	* 2.0	11.1	81.7	17.1	98.8	13.6	82.7
24	68.1	13.4	81.5	* 4.5	* 0.0	* 4.5	86.0	14.6	100.6	* 5.2	85.5
Total aged 15-24	346.7	181.5	528.2	61.4	23.8	85.2	613.4	277.6	891.0	13.9	68.8

(a) Includes institutionalised persons.

TABLE 5. LABOUR FORCE STATUS: FAMILY STATUS, NSW, AUGUST 1995

Family status	Employed			Unemployed			Labour force ('000)	Not in labour force ('000)	Civilian population aged 15 and over ('000)	Unemployment rate (per cent)	Participation rate (per cent)
	Full-time workers ('000)	Part-time workers ('000)	Total ('000)	Looking for full-time work ('000)	Looking for part-time work ('000)	Total ('000)					
<i>Member of a family</i>	1,707.8	554.9	2,262.6	141.9	38.3	180.2	2,442.9	1,348.2	3,791.0	7.4	64.4
Husband	928.2	59.3	987.5	51.2	* 1.0	52.2	1,039.7	339.8	1,379.5	5.0	75.4
With children aged 0-14 present	505.3	26.1	531.4	32.6	* 0.7	33.2	564.7	35.4	600.0	5.9	94.1
Without children aged 0-14 present	422.9	33.2	456.1	18.6	* 0.3	18.9	475.0	304.4	779.5	4.0	60.9
With dependants present	579.6	28.8	608.3	35.0	* 0.7	35.7	644.0	47.5	691.6	5.5	93.1
Without dependants present	348.6	30.5	379.2	16.2	* 0.3	16.5	395.7	292.3	687.9	4.2	57.5
Wife	393.2	305.1	698.2	24.8	11.4	36.2	734.4	611.4	1,345.8	4.9	54.6
With children aged 0-14 present	154.2	184.3	338.5	14.4	7.6	22.0	360.5	224.5	584.9	6.1	61.6
Without children aged 0-14 present	238.9	120.8	359.7	10.3	* 3.9	14.2	373.9	386.9	760.8	3.8	49.1
With dependants present	189.2	210.2	399.3	15.0	7.9	22.9	422.2	252.4	674.6	5.4	62.6
Without dependants present	204.0	94.9	298.9	9.7	* 3.6	13.3	312.2	359.0	671.2	4.3	46.5
Not-married male family head	22.8	* 2.8	25.6	* 2.5	* 0.3	* 2.8	28.4	16.4	44.8	* 10.0	63.4
With children aged 0-14 present	6.0	* 1.6	7.6	* 0.9	* 0.3	* 1.3	8.9	* 3.6	12.5	* 14.2	71.2
Without children aged 0-14 present	16.8	* 1.2	18.0	* 1.6	* 0.0	* 1.6	19.6	12.8	32.4	* 8.0	60.4
With dependants present	13.3	* 1.9	15.2	* 1.6	* 0.3	* 1.9	17.1	* 4.5	21.7	* 11.0	79.1
Without dependants present	9.5	* 0.9	10.4	* 1.0	* 0.0	* 1.0	11.3	11.9	23.2	* 8.4	48.8
Not-married female family head	47.8	32.4	80.2	8.5	6.5	15.1	95.2	109.8	205.0	15.8	46.5
With children aged 0-14 present	22.2	20.6	42.8	6.0	6.2	12.3	55.1	63.0	118.0	22.3	46.7
Without children aged 0-14 present	25.6	11.8	37.4	* 2.5	* 0.3	* 2.8	40.2	46.8	87.0	* 6.9	46.2
With dependants present	32.0	25.0	57.0	7.0	6.2	13.2	70.2	71.5	141.7	18.8	49.5
Without dependants present	15.8	7.4	23.2	* 1.6	* 0.3	* 1.9	25.0	38.2	63.3	* 7.5	39.6
Full-time student aged 15-24 (a)	* 2.7	99.3	102.0	* 2.2	15.5	17.7	119.7	178.2	297.8	14.8	40.2
Other child of family head	288.8	51.5	340.3	46.1	* 3.3	49.3	389.6	46.8	436.4	12.7	89.3
Other relative of family head	24.4	* 4.5	28.9	6.6	* 0.3	6.9	35.8	45.8	81.6	19.3	43.9
<i>Not a member of a family</i>	333.7	63.4	397.1	32.0	* 4.1	36.1	433.3	313.0	746.3	8.3	58.1
Living alone	161.7	28.5	190.2	10.5	* 0.9	11.5	201.7	266.2	467.9	5.7	43.1
Not living alone	172.0	34.9	206.9	21.5	* 3.2	24.7	231.6	46.8	278.4	10.7	83.2
<i>Not family coded</i>	70.3	21.4	91.7	8.2	* 2.1	10.3	102.0	167.0	269.0	10.1	37.9
Total	2,111.8	639.6	2,751.5	182.1	44.6	226.6	2,978.1	1,828.2	4,806.3	7.6	62.0

(a) Excludes persons aged 20-24 attending school.

TABLE 6. EMPLOYED PERSONS: STATUS IN EMPLOYMENT (a), NSW ('000)

Status in employment	Males			Females			Persons		
	August 1994	May 1995	August 1995	August 1994	May 1995	August 1995	August 1994	May 1995	August 1995
Employees	1,252.2	1,314.7	1,299.1	984.6	1,043.7	1,053.7	2,236.8	2,358.5	2,352.7
Employers	72.3	73.6	87.1	34.3	36.4	35.7	106.6	110.1	122.8
Own account workers	182.0	171.9	173.5	80.7	78.5	79.7	262.7	250.4	253.1
Total employed (b)	1,519.8	1,573.6	1,570.8	1,114.6	1,172.9	1,180.7	2,634.4	2,746.5	2,751.5

(a) Status in Employment replaces the previous term Status of Worker. No definitional changes have been made - the only changes are to the classification titles. (b) Includes contributing family workers.

**TABLE 7. EMPLOYED PERSONS: AGE, NSW
('000)**

Month	Age group (years)								Total employed
	15-19	20-24	25-34	35-44	45-54	55-59	60-64	65 and over	
MALES									
1994									
August	94.9	179.8	387.0	384.6	307.3	89.4	49.7	27.0	1,519.8
1995									
May	94.5	184.8	400.9	396.5	323.2	93.2	52.4	28.1	1,573.6
June	89.9	188.4	402.4	399.8	323.5	93.6	48.7	29.2	1,575.4
July	89.4	189.9	412.0	394.9	319.9	97.4	50.6	27.9	1,582.0
August	90.0	186.6	403.1	398.9	321.8	96.2	50.6	23.6	1,570.8
MARRIED FEMALES									
1994									
August	* 3.0	41.2	191.7	224.4	166.6	33.0	11.1	6.7	677.6
1995									
May	* 2.3	41.7	196.9	231.1	182.7	39.5	12.9	6.3	713.4
June	* 2.3	48.1	203.3	239.0	186.1	39.5	14.0	6.5	738.7
July	* 2.2	45.3	194.6	242.5	188.2	41.8	11.7	7.0	733.4
August	* 2.8	42.4	193.7	240.8	183.2	41.8	11.5	5.4	721.6
ALL FEMALES									
1994									
August	89.4	158.8	289.3	289.5	214.1	48.0	13.9	11.4	1,114.6
1995									
May	99.6	159.6	310.8	292.7	230.4	50.1	18.8	10.9	1,172.9
June	99.1	164.5	310.5	300.4	236.6	50.2	20.8	11.3	1,193.5
July	94.3	165.0	298.8	304.4	241.5	53.1	18.4	12.8	1,188.4
August	93.5	158.0	300.5	306.2	236.4	54.6	19.6	11.8	1,180.7
PERSONS									
1994									
August	184.4	338.6	676.3	674.2	521.4	137.5	63.7	38.4	2,634.4
1995									
May	194.1	344.5	711.7	689.2	553.6	143.3	71.2	39.0	2,746.5
June	189.0	352.9	712.9	700.2	560.1	143.9	69.5	40.5	2,769.0
July	183.7	355.0	710.8	699.3	561.3	150.5	69.0	40.7	2,770.4
August	183.5	344.6	703.6	705.0	558.2	150.8	70.2	35.4	2,751.5

ANNUAL CHANGE IN EMPLOYMENT BY AGE, NSW, AUGUST 1994 TO AUGUST 1995

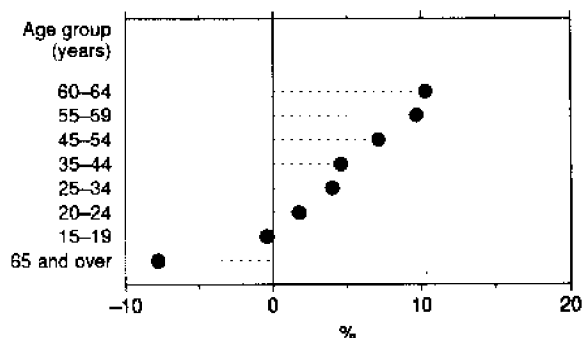
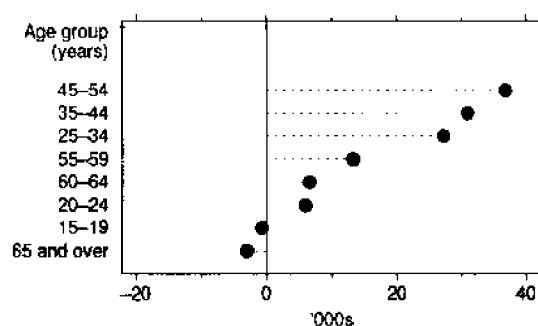


TABLE 8. EMPLOYED PERSONS: INDUSTRY (a), NSW, AUGUST 1995
(^{'000})

<i>Industry division and subdivision</i>	<i>Males</i>	<i>Females</i>	<i>Persons</i>
<i>Agriculture, forestry and fishing</i>	77.9	33.1	111.0
Agriculture	67.0	31.3	98.3
Services to agriculture, hunting and trapping	* 5.1	* 1.5	6.6
Forestry and logging	* 1.9	* 0.0	* 1.9
Commercial fishing	* 3.9	* 0.3	* 4.1
<i>Mining</i>	25.3	* 0.6	25.9
Coal mining	17.5	* 0.0	17.5
Oil and gas extraction	* 0.3	* 0.0	* 0.3
Metal ore mining	* 1.6	* 0.3	* 1.9
Other mining	* 3.9	* 0.3	* 4.2
Services to mining	* 1.9	* 0.0	* 1.9
<i>Manufacturing</i>	269.1	98.5	367.7
Food, beverage and tobacco manufacturing	42.3	16.1	58.4
Textile, clothing, footwear and leather manufacturing	11.6	15.5	27.1
Wood and paper product manufacturing	19.2	* 3.1	22.4
Printing, publishing and recorded media	24.4	14.4	38.8
Petroleum, coal, chemical and associated product manufacturing	27.9	13.5	41.4
Non-metallic mineral product manufacturing	13.9	* 4.6	18.5
Metal product manufacturing	57.6	9.4	67.0
Machinery and equipment manufacturing	57.2	15.5	72.8
Other manufacturing	15.0	6.5	21.4
<i>Electricity, gas and water supply</i>	22.9	5.4	28.3
Electricity and gas supply	14.7	* 3.6	18.3
Water supply, sewerage and drainage services	8.2	* 1.8	10.0
<i>Construction</i>	180.8	28.7	209.5
General construction	61.1	11.8	72.9
Construction trade services	119.7	16.9	136.6
<i>Wholesale trade</i>	125.0	67.7	192.8
Basic material wholesaling	33.6	14.9	48.5
Machinery and motor vehicle wholesaling	54.4	24.1	78.4
Personal and household good wholesaling	37.0	28.8	65.9
<i>Retail trade</i>	186.5	199.6	386.1
Food retailing	67.3	85.4	152.7
Personal and household good retailing	59.7	97.5	157.2
Motor vehicle retailing and services	59.5	16.7	76.2
<i>Accommodation, cafes and restaurants</i>	69.1	71.3	140.5
<i>Transport and storage</i>	101.1	27.4	128.5
Road transport	55.5	8.2	63.7
Rail transport	18.0	* 0.9	18.9
Water transport	* 2.3	* 0.0	* 2.3
Air and Space transport	10.5	7.0	17.5
Other transport	* 0.0	* 0.0	* 0.0
Services to transport	12.6	10.3	22.9
Storage	* 2.2	* 0.9	* 3.1
<i>Communication services</i>	35.2	15.5	50.7
<i>Finance and insurance</i>	59.0	72.8	131.8
Finance	35.3	48.9	84.3
Insurance	11.4	14.5	25.9
Services to finance and insurance	12.3	9.4	21.7
<i>Property and business services</i>	142.1	130.9	273.0
Property services	14.8	17.8	32.6
Business services	127.3	113.2	240.4
<i>Government administration and defence</i>	72.1	35.2	107.3
Government administration	67.1	32.7	99.8
Defence	* 5.0	* 2.5	7.5
<i>Education</i>	60.9	125.8	186.7
<i>Health and community services</i>	62.5	190.5	253.0
Health services	48.6	148.1	196.6
Community services	13.9	42.5	56.4
<i>Cultural and recreational services</i>	33.4	28.7	62.1
Motion picture, radio and television services	10.6	7.5	18.1
Libraries, museums and the arts	9.9	8.4	18.3
Sport and recreation	12.9	12.8	25.7
<i>Personal and other services</i>	47.5	48.9	96.4
Personal services	13.1	27.2	40.3
Other services	32.2	16.4	48.6
Private households employing staff	* 2.3	5.3	7.6
Total employed	1,570.8	1,180.7	2,751.5

(a) Industry data are now classified according to the Australian and New Zealand Standard Industrial Classification. See the Explanatory Notes for more details.

EMPLOYMENT BY INDUSTRY DIVISION, NSW, AUGUST 1995

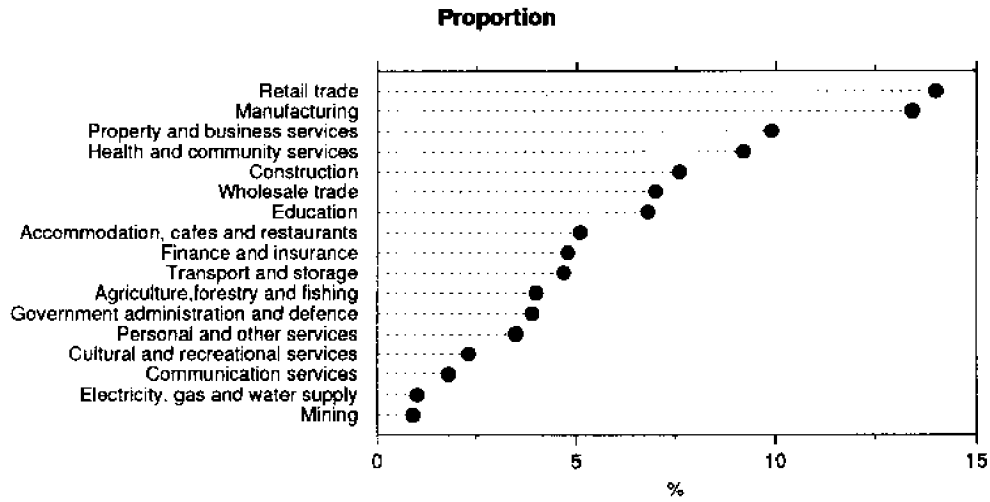
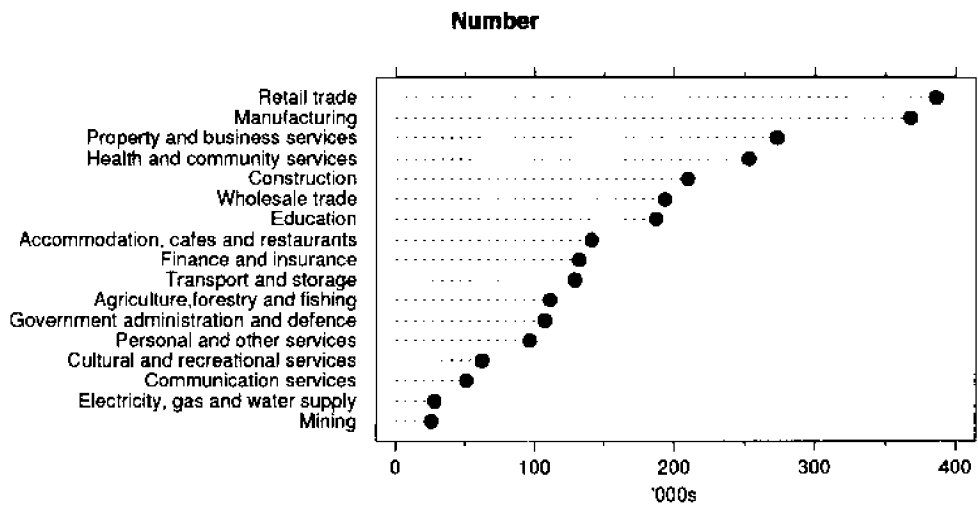
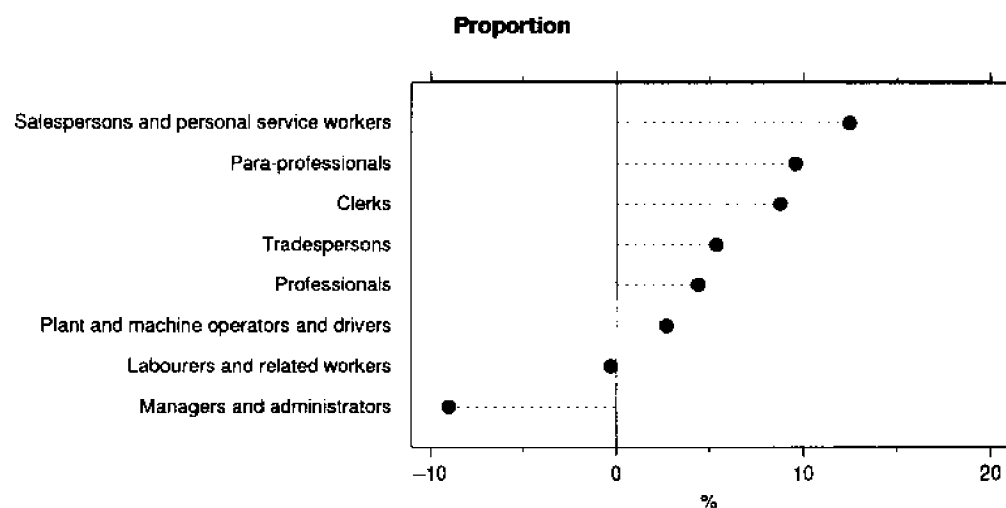
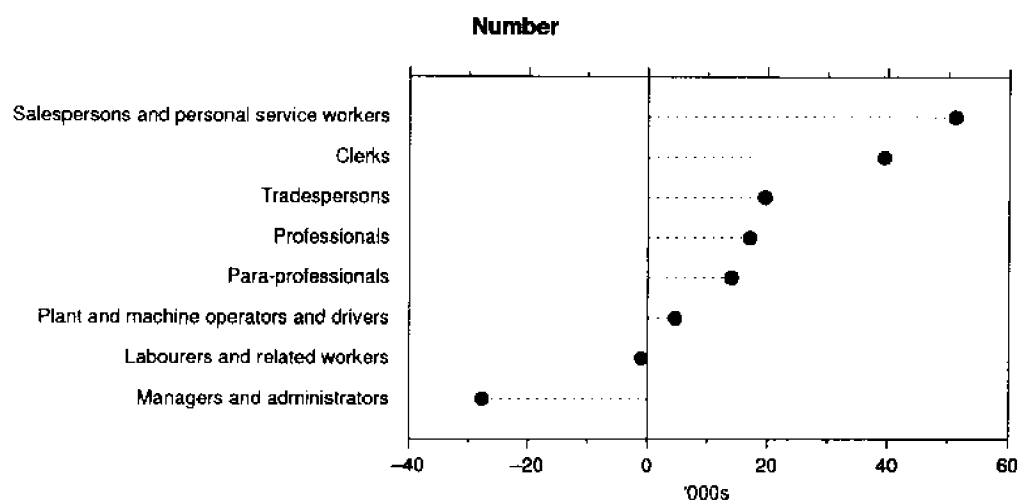


TABLE 9. EMPLOYED PERSONS: OCCUPATION, NSW
(*000)

Major and minor occupation group	Males			Females			Persons		
	August 1994	May 1995	August 1995	August 1994	May 1995	August 1995	August 1994	May 1995	August 1995
<i>Managers and administrators</i>	226.6	220.3	213.3	81.2	65.3	66.8	307.8	285.6	280.1
Legislators and government appointed officials	* 0.0	* 0.6	* 0.6	* 0.0	* 0.0	* 0.0	* 0.0	* 0.6	* 0.6
General managers	16.2	21.0	19.1	* 3.3	* 3.6	* 1.6	19.5	24.6	20.7
Specialist managers	55.4	52.5	53.1	14.5	13.5	14.7	69.9	66.0	67.8
Farmers and farm managers	50.0	42.2	41.7	21.6	14.6	18.2	71.5	56.8	59.9
Managing supervisors (sales and service)	71.6	66.9	65.9	39.9	32.1	30.4	111.5	98.9	96.3
Managing supervisors (other business)	33.4	37.2	33.0	* 1.9	* 1.5	* 1.8	35.3	38.7	34.8
<i>Professionals</i>	218.4	228.3	225.5	167.2	176.1	177.2	385.6	404.5	402.7
Natural scientists	8.6	9.2	7.7	* 4.6	* 4.0	* 3.1	13.2	13.2	10.7
Building professionals and engineers	41.2	36.8	39.9	* 1.2	* 2.5	* 1.2	42.4	39.3	41.1
Health diagnosis and treatment practitioners	20.7	21.8	21.6	11.9	16.3	16.2	32.6	38.0	37.8
School teachers	26.5	25.4	24.1	61.7	61.7	64.2	88.2	87.1	88.3
Other teachers and instructors	14.6	20.2	15.8	17.4	19.5	19.9	32.0	39.7	35.7
Social professionals	15.5	14.4	15.6	6.8	10.2	10.8	22.3	24.6	26.4
Business professionals	66.2	73.6	73.5	37.5	37.7	41.5	103.7	111.3	115.0
Artists and related professionals	16.0	19.7	19.6	14.0	12.7	10.5	30.0	32.5	30.1
Miscellaneous professionals	9.1	7.3	7.7	12.1	11.5	9.9	21.2	18.8	17.6
<i>Para-professionals</i>	73.6	79.5	81.4	73.7	77.1	79.9	147.3	156.7	161.3
Medical and science technical officers and technicians	5.7	6.1	6.4	5.7	* 3.8	* 4.8	11.5	9.8	11.2
Engineering and building associates and technicians	21.5	26.2	23.9	* 1.2	* 1.3	* 1.6	22.7	27.5	25.5
Air and sea transport technical workers	* 3.5	* 4.5	* 4.0	* 0.0	* 0.0	* 0.3	* 3.5	* 4.5	* 4.4
Registered nurses	* 4.2	* 4.4	* 4.5	50.4	54.7	52.0	54.6	59.1	56.6
Police	9.1	10.0	10.7	* 1.5	* 1.3	* 1.5	10.6	11.3	12.3
Miscellaneous para-professionals	29.5	28.4	31.8	14.9	16.2	19.7	44.3	44.5	51.5
<i>Tradespersons</i>	324.6	352.3	342.3	38.5	39.9	40.5	363.1	392.2	382.8
Metal fitting and machining tradespersons	36.7	35.3	34.8	* 0.3	* 0.5	* 0.6	37.0	35.9	35.4
Other metal tradespersons	30.6	38.3	31.7	* 0.3	* 0.3	* 0.6	30.8	38.6	32.3
Electrical and electronics tradespersons	55.1	70.7	67.1	* 0.6	* 0.6	* 0.3	55.7	71.3	67.4
Building tradespersons	75.9	89.3	84.6	* 1.2	* 0.6	* 0.9	77.2	90.0	85.5
Printing tradespersons	10.8	11.0	10.7	* 2.2	* 2.5	* 1.8	13.0	13.5	12.5
Vehicle tradespersons	44.3	40.4	41.4	* 0.3	* 0.6	* 0.0	44.6	41.1	41.4
Food tradespersons	33.3	28.0	28.0	11.5	11.4	11.1	44.8	39.4	39.1
Amenity horticultural tradespersons	11.9	15.1	17.3	* 1.5	* 2.9	* 3.6	13.4	18.0	20.9
Miscellaneous tradespersons	26.1	24.1	26.8	20.6	20.4	21.6	46.7	44.5	48.4
<i>Clerks</i>	103.8	105.6	114.9	345.7	361.5	374.0	449.5	467.1	488.9
Stenographers and typists	* 3.1	* 1.8	* 1.7	92.8	94.7	95.8	95.9	96.5	97.5
Data processing and business machine operators	7.9	8.9	9.3	35.2	30.4	31.2	43.2	39.3	40.6
Numerical clerks	41.2	38.3	43.9	110.3	117.8	126.1	151.5	156.1	170.0
Filing, sorting and copying clerks	6.1	10.3	12.5	20.6	19.1	24.6	26.7	29.4	37.1
Material recording and despatching clerks	17.2	17.1	18.4	7.2	8.5	9.2	24.4	25.7	27.6
Receptionists, telephonists and messengers	13.7	10.9	13.3	54.3	61.2	64.6	68.0	72.1	77.9
Miscellaneous clerks	14.6	18.3	15.8	25.2	29.7	22.4	39.8	47.9	38.3
<i>Salespersons and personal service workers</i>	148.3	171.8	171.0	260.1	294.0	288.4	408.3	465.8	459.4
Investment, insurance and real estate salespersons	21.5	20.5	19.8	10.1	5.4	6.8	31.6	26.0	26.6
Sales representatives	27.7	34.9	32.6	12.5	15.1	13.7	40.2	50.0	46.3
Sales assistants	59.7	69.3	67.8	107.9	122.7	123.3	167.6	192.0	191.1
Tellers, cashiers and ticket salespersons	11.0	12.4	12.2	36.8	49.3	44.2	47.9	61.7	56.4
Miscellaneous salespersons	22.9	28.9	28.2	45.2	47.1	43.9	68.1	76.0	72.1
Personal service workers	5.4	5.7	10.4	47.5	54.4	56.5	52.9	60.2	67.0
<i>Plant and machine operators, and drivers</i>	152.1	150.6	156.6	19.6	22.6	19.7	171.7	173.2	176.3
Road and rail transport drivers	81.0	80.8	85.1	* 3.2	5.6	5.3	84.2	86.3	90.4
Mobile plant operators (except transport)	36.8	31.7	31.5	* 0.3	* 0.0	* 0.0	37.1	31.7	31.5
Stationary plant operators	14.7	17.2	16.7	* 0.3	* 0.0	* 0.3	15.0	17.2	17.0
Machine operators	19.6	20.9	23.4	15.8	17.1	14.1	35.4	38.0	37.4
<i>Labourers and related workers</i>	272.4	265.1	265.8	128.6	136.3	134.2	401.0	401.5	400.0
Trades assistants and factory hands	70.4	66.6	73.5	32.1	36.5	38.4	102.5	103.0	111.9
Agricultural labourers and related workers	30.3	24.2	31.7	7.1	11.1	10.2	37.5	35.3	41.9
Cleaners	29.6	30.3	26.2	38.5	41.7	39.0	68.2	72.0	65.2
Construction and mining labourers	41.2	47.4	43.8	* 1.0	* 0.7	* 0.6	42.1	48.1	44.5
Miscellaneous labourers and related workers	100.9	96.6	90.5	49.9	46.4	45.9	150.9	143.0	136.5
Total employed	1,519.8	1,573.6	1,570.8	1,114.6	1,172.9	1,180.7	2,634.4	2,746.5	2,751.5

ANNUAL CHANGE IN EMPLOYMENT BY OCCUPATION GROUP, NSW, AUGUST 1994 TO AUGUST 1995



**TABLE 10. UNEMPLOYED PERSONS: AGE, NSW
(^{'000})**

Month	Age group (years)						Total unemployed
	15-19	20-24	25-34	35-44	45-54	55 and over	
MALES							
1994— August	21.3	29.2	40.2	28.7	19.9	14.4	153.8
1995— May	24.6	25.7	27.3	29.2	16.9	13.6	137.4
June	23.1	26.3	29.8	24.7	16.8	13.5	134.2
July	21.8	22.6	32.0	25.3	16.6	12.8	131.0
August	23.9	23.6	34.6	26.7	14.4	11.4	134.5
FEMALES							
1994— August	22.5	20.5	23.6	19.5	12.1	* 3.2	101.4
1995— May	21.2	17.3	19.7	17.8	9.1	* 4.1	89.2
June	19.0	14.0	20.2	20.2	8.8	* 2.6	84.8
July	17.1	14.4	20.7	17.3	9.0	* 1.7	80.2
August	19.8	17.8	22.6	18.8	10.8	* 2.3	92.2
PERSONS							
1994— August	43.8	49.7	63.8	48.2	32.0	17.7	255.1
1995— May	45.9	43.0	47.0	47.1	26.0	17.7	226.6
June	42.1	40.4	49.9	44.9	25.7	16.1	219.0
July	38.9	37.0	52.6	42.6	25.5	14.5	211.1
August	43.7	41.5	57.1	45.5	25.2	13.7	226.6

**TABLE 11. UNEMPLOYED PERSONS: UNEMPLOYMENT RATE BY AGE, NSW
(per cent)**

Month	Age group (years)						Total unemployment rate
	15-19	20-24	25-34	35-44	45-54	55 and over	
MALES							
1994							
August	18.4	14.0	9.4	6.9	6.1	8.0	9.2
1995							
May	20.7	12.2	6.4	6.9	5.0	7.3	8.0
June	20.5	12.3	6.9	5.8	4.9	7.3	7.8
July	19.6	10.6	7.2	6.0	4.9	6.8	7.6
August	21.0	11.2	7.9	6.3	4.3	6.2	7.9
FEMALES							
1994							
August	20.1	11.4	7.5	6.3	5.3	* 4.2	8.3
1995							
May	17.6	9.8	6.0	5.7	3.8	* 4.9	7.1
June	16.1	7.9	6.1	6.3	3.6	* 3.0	6.6
July	15.4	8.0	6.5	5.4	3.6	* 2.0	6.3
August	17.5	10.1	7.0	5.8	4.4	* 2.6	7.2
PERSONS							
1994							
August	19.2	12.8	8.6	6.7	5.8	6.9	8.8
1995							
May	19.1	11.1	6.2	6.4	4.5	6.5	7.6
June	18.2	10.3	6.5	6.0	4.4	5.9	7.3
July	17.5	9.4	6.9	5.7	4.3	5.3	7.1
August	19.2	10.7	7.5	6.1	4.3	5.1	7.6

TABLE 12. UNEMPLOYED PERSONS: INDUSTRY (a) AND OCCUPATION OF LAST FULL-TIME JOB, NSW, AUGUST 1995
(^{'000})

	<i>Males</i>	<i>Females</i>	<i>Persons</i>
<i>Had worked for two weeks or more in a full-time job in the last two years</i>	69.5	27.7	97.3
Industry division			
Agriculture, forestry and fishing	* 3.5	* 0.6	* 4.1
Manufacturing	16.2	* 4.0	20.2
Construction	14.8	* 0.7	15.4
Wholesale trade	* 3.4	* 0.3	* 3.7
Retail trade	8.5	* 4.7	13.2
Accommodation, cafes and restaurants	* 4.5	* 4.0	8.5
Transport and storage	5.8	* 1.0	6.8
Finance and insurance	* 0.8	* 0.6	* 1.4
Property and business services	* 2.5	* 3.2	5.7
Education	* 1.6	* 1.9	* 3.5
Health and community services	* 1.2	* 2.5	* 3.7
Cultural and recreational services	* 1.6	* 0.7	* 2.3
Personal and other services	* 1.2	* 1.6	* 2.8
Other industries (b)	* 3.9	* 2.0	5.9
Major occupation group—			
Managers and administrators	* 4.1	* 1.3	5.4
Professionals	* 3.2	* 1.6	* 4.8
Para-professionals	* 2.6	* 1.0	* 3.6
Tradespersons	19.2	* 1.6	20.8
Clerks	* 3.0	8.4	11.3
Salespersons and personal service workers	* 3.8	8.2	12.0
Plant and machine operators, and drivers	9.3	* 0.9	10.2
Labourers and related workers	24.4	* 4.7	29.1
<i>Had not worked full-time for two weeks or more in the last two years</i>	64.3	60.9	125.2
Looking for first job	17.2	17.2	34.4
Had worked at some time in the past	47.1	43.7	90.8
<i>Stood down</i>	* 0.6	* 3.6	* 4.2
Total unemployed	134.5	92.2	226.6

(a) Industry data are now classified according to the Australian and New Zealand Standard Industrial Classification. See the Explanatory Notes for more details.
(b) Comprises Mining; Electricity, gas and water supply; Communication services; and Government administration and defence.

UNEMPLOYMENT RATE BY AGE, NSW

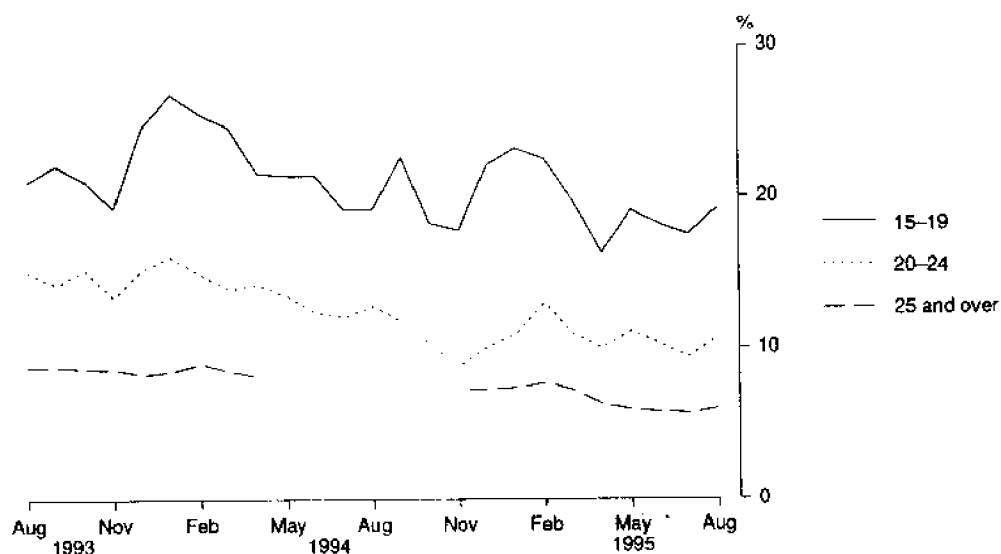


TABLE 13. UNEMPLOYED PERSONS: DURATION OF UNEMPLOYMENT, NSW

Duration of unemployment (weeks)	Males		Females		Persons				
	August 1994	August 1995	August 1994	August 1995	August 1994	May 1995	June 1995	July 1995	August 1995
— '000 —									
Under 52	92.7	83.0	62.8	66.8	155.5	147.2	140.0	139.6	149.8
Under 2	* 4.7	6.5	* 4.0	7.4	8.7	17.6	11.7	9.5	13.9
2 and under 4	7.1	9.2	6.2	9.5	13.3	17.1	19.0	18.7	18.7
4 and under 8	15.3	14.7	11.1	12.0	26.4	21.2	18.5	21.1	26.7
8 and under 13	11.1	11.4	6.8	7.2	17.9	17.7	20.9	16.2	18.6
13 and under 26	18.8	15.3	11.8	10.5	30.6	46.3	35.3	28.2	25.8
26 and under 39	28.6	21.2	19.6	17.5	48.2	22.4	28.1	38.6	38.7
39 and under 52	7.0	* 4.8	* 3.3	* 2.7	10.3	* 4.9	6.5	7.3	7.5
52 and over	61.1	51.4	38.5	25.4	99.6	79.4	78.9	71.5	76.8
52 and under 104	24.5	17.6	19.6	10.0	44.1	29.8	28.6	27.7	27.6
104 and over	36.6	33.8	18.9	15.4	55.5	49.6	50.3	43.8	49.2
Total unemployed	153.8	134.5	101.4	92.2	255.1	226.6	219.0	211.1	226.6
— Weeks —									
Average	72.0	65.7	56.3	49.4	65.8	58.0	61.1	58.3	59.1
Median	32	30	29	25	30	22	26	26	27

TABLE 14. UNEMPLOYED PERSONS: UNEMPLOYMENT RATE BY BIRTHPLACE AND PERIOD OF ARRIVAL, NSW (per cent)

	August 1994	May 1995	June 1995	July 1995	August 1995
Birthplace—					
Australia	8.4	7.0	6.6	6.4	6.8
Outside Australia	10.0	9.4	9.4	9.1	9.9
Main English speaking countries	6.6	6.4	5.0	5.1	5.3
Other countries	11.8	11.1	11.9	11.3	12.3
Period of arrival of overseas born—					
Before 1961	* 3.5	5.8	* 4.3	6.0	5.1
1961–1970	8.9	7.7	6.9	7.0	7.7
1971–1980	9.8	8.9	9.5	7.3	8.0
1981–1985	13.0	9.6	10.4	9.9	12.7
1986–1990	7.9	10.5	9.5	9.6	10.7
1991 to survey date	23.8	17.1	19.6	19.3	19.2
Total unemployment rate	8.8	7.6	7.3	7.1	7.6

UNEMPLOYMENT RATE BY PERIOD OF ARRIVAL OF OVERSEAS BORN, NSW, AUGUST 1995

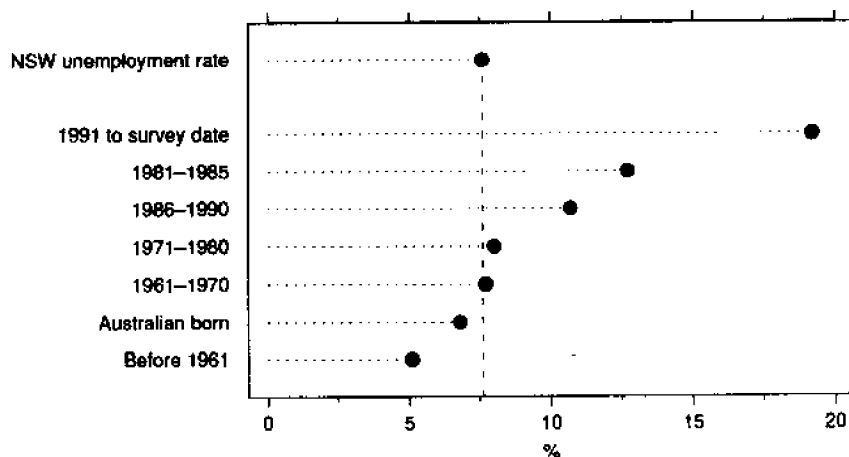


TABLE 15. UNEMPLOYED PERSONS: DURATION OF UNEMPLOYMENT BY AGE, NSW

Month	Duration of unemployment (weeks)					Total unemployed persons ('000)	Average duration (weeks)	Median duration (weeks)
	Under 13 ('000)	13 and under 26 ('000)	26 and under 39 ('000)	39 and under 104 ('000)	104 and over ('000)			
15-19								
1994 - August	16.6	* 5.1	11.8	7.5	* 2.8	43.8	30.4	26
1995 - June	19.4	9.4	6.6	* 4.2	* 2.5	42.1	23.9	14
July	15.7	* 4.4	11.6	5.6	* 1.7	38.9	27.0	20
August	18.3	6.4	9.6	6.2	* 3.2	43.7	29.9	20
20-24								
1994 - August	12.3	6.5	11.1	9.8	9.9	49.7	58.8	30
1995 - June	11.8	9.1	* 5.2	7.0	7.3	40.4	56.8	24
July	13.8	5.8	* 4.4	7.3	5.8	37.0	48.6	23
August	15.6	* 4.6	6.0	7.8	7.5	41.5	46.5	26
25-34								
1994 - August	16.6	7.3	11.5	14.0	14.4	63.8	68.7	30
1995 - June	14.5	7.8	6.1	9.8	11.6	49.9	67.1	28
July	14.0	9.0	10.2	8.8	10.6	52.6	59.2	26
August	21.0	5.8	8.6	9.3	12.4	57.1	57.9	26
35-44								
1994 - August	10.9	6.2	8.5	10.6	12.1	48.2	69.9	34
1995 - June	14.2	* 4.7	6.4	7.5	12.1	44.9	66.1	27
July	11.2	* 4.5	7.3	7.1	12.5	42.6	67.9	31
August	14.2	* 4.1	9.2	6.0	11.9	45.5	65.7	31
45 AND OVER								
1994 - August	9.9	5.6	5.3	12.5	16.3	49.6	96.2	52
1995 - June	10.1	* 4.2	* 3.9	6.7	16.8	41.7	90.3	52
July	10.8	* 4.5	* 5.1	6.3	13.3	40.0	86.1	34
August	8.7	* 4.9	* 5.3	5.8	14.1	38.9	99.3	43
TOTAL								
1994 - August	66.4	30.6	48.2	54.4	55.5	255.1	65.8	30
1995 - June	70.1	35.3	28.1	35.2	50.3	219.0	61.1	26
July	65.5	28.2	38.6	35.1	43.8	211.1	58.3	26
August	77.8	25.8	38.7	35.1	49.2	226.6	59.1	27

TABLE 16. LABOUR FORCE STATUS, SYDNEY (MSR)

Month	Employed			Unemployed			Labour force ('000)	Not in labour force ('000)	Civilian population aged 15 and over ('000)	Unemployment rate (per cent)	Participation rate (per cent)
	Full-time workers ('000)	Part-time workers ('000)	Total ('000)	Looking for full-time work ('000)	Looking for part-time work ('000)	Total ('000)					
MALES											
August—											
1991	883.0	83.1	966.1	88.5	7.8	96.2	1,062.4	361.7	1,424.1	9.1	74.6
1992	856.3	90.0	946.4	103.2	10.9	114.1	1,060.4	379.3	1,439.7	10.8	73.7
1993	853.2	85.2	938.4	96.1	12.4	108.5	1,046.8	405.3	1,452.2	10.4	72.1
1994											
June	879.4	105.6	985.0	86.5	9.6	96.1	1,081.0	382.7	1,463.8	8.9	73.9
July	899.0	98.9	997.9	78.5	9.3	87.8	1,085.7	379.2	1,465.0	8.1	74.1
August	880.6	111.8	992.4	80.6	9.1	89.7	1,082.2	384.0	1,466.2	8.3	73.8
1995—											
May	907.5	108.9	1,016.5	66.8	9.7	76.5	1,093.0	381.9	1,474.9	7.0	74.1
June	910.4	101.7	1,012.1	72.9	6.9	79.7	1,091.9	384.1	1,476.0	7.3	74.0
July	926.7	92.7	1,019.4	67.3	8.6	75.9	1,095.3	381.2	1,476.5	6.9	74.2
August	909.7	96.2	1,006.0	71.2	7.4	78.7	1,084.6	392.3	1,476.9	7.3	73.4
MARRIED FEMALES											
August—											
1991	238.6	169.0	407.6	17.5	8.3	25.8	433.4	391.5	824.9	6.0	52.5
1992	235.6	186.5	422.1	17.2	6.9	24.1	446.2	379.2	825.4	5.4	54.1
1993	240.7	177.2	417.9	18.4	9.3	27.7	445.6	378.2	823.8	6.2	54.1
1994											
June	261.1	176.3	437.4	19.1	8.0	27.1	464.4	381.8	846.2	5.8	54.9
July	265.2	169.5	434.8	18.5	8.2	26.7	461.5	376.1	837.6	5.8	55.1
August	255.6	179.1	434.7	13.8	7.1	21.0	455.7	390.1	845.8	4.6	53.9
1995											
May	261.1	185.7	446.8	13.4	8.3	21.7	468.5	387.6	856.1	4.6	54.7
June	264.1	196.6	460.7	15.0	5.6	20.5	481.2	379.5	860.7	4.3	55.9
July	270.3	188.1	458.4	12.3	5.5	17.8	476.2	376.2	852.4	3.7	55.9
August	269.8	185.9	455.7	14.6	7.7	22.3	478.0	378.8	856.8	4.7	55.8
ALL FEMALES											
August—											
1991	464.7	246.7	711.4	42.0	18.1	60.1	771.5	714.6	1,486.0	7.8	51.9
1992	448.3	276.3	724.6	50.0	18.1	68.2	792.8	709.5	1,502.3	8.6	52.8
1993	463.9	261.8	725.7	49.2	19.5	68.7	794.4	720.8	1,515.2	8.6	52.4
1994											
June	485.1	276.8	761.9	42.5	20.0	62.5	824.4	702.8	1,527.2	7.6	54.0
July	494.7	269.8	764.4	49.2	17.9	67.1	831.5	697.0	1,528.5	8.1	54.4
August	478.9	275.0	753.9	39.4	16.5	55.9	809.8	720.0	1,529.8	6.9	52.9
1995—											
May	487.4	281.5	768.9	36.1	19.7	55.8	824.7	712.9	1,537.6	6.8	53.6
June	496.8	286.8	783.6	37.0	15.5	52.5	836.1	702.4	1,538.5	6.3	54.3
July	503.8	274.1	777.9	37.0	13.2	50.2	828.1	710.9	1,538.9	6.1	53.8
August	494.9	277.4	772.3	34.5	19.2	53.7	826.0	713.5	1,539.4	6.5	53.7
PERSONS											
August—											
1991	1,347.7	329.8	1,677.5	130.5	25.9	156.3	1,833.8	1,076.3	2,910.1	8.5	63.0
1992	1,304.7	366.3	1,671.0	153.2	29.0	182.2	1,853.2	1,088.8	2,942.0	9.8	63.0
1993	1,317.1	347.0	1,664.1	145.3	31.9	177.2	1,841.2	1,126.1	2,967.3	9.6	62.0
1994											
June	1,364.5	382.4	1,746.9	129.0	29.5	158.6	1,905.5	1,085.5	2,991.0	8.3	63.7
July	1,393.6	368.7	1,762.3	127.7	27.2	154.9	1,917.2	1,076.3	2,993.5	8.1	64.0
August	1,359.5	386.8	1,746.3	120.1	25.6	145.7	1,892.0	1,104.1	2,996.1	7.7	63.1
1995											
May	1,395.0	390.4	1,785.4	102.9	29.4	132.3	1,917.6	1,094.8	3,012.4	6.9	63.7
June	1,407.2	388.6	1,795.8	109.8	22.4	132.2	1,928.0	1,086.5	3,014.5	6.9	64.0
July	1,430.5	366.8	1,797.3	104.3	21.8	126.1	1,923.4	1,092.1	3,015.4	6.6	63.8
August	1,404.6	373.6	1,778.3	105.7	26.6	132.3	1,910.6	1,105.8	3,016.4	6.9	63.3

TABLE 17. LABOUR FORCE STATUS, BALANCE OF NSW (MSR)

Month	Employed		Unemployed			Labour force ('000)	Not in labour force ('000)	Civilian population aged 15 and over ('000)	Unemployment rate (per cent)	Participation rate (per cent)	
	Full-time workers ('000)	Part-time workers ('000)	Total ('000)	Looking for full-time work ('000)	Looking for part-time work ('000)						
MALES											
August—											
1991	501.7	45.1	546.8	58.5	* 3.5	62.0	608.8	233.8	842.7	10.2	72.3
1992	478.0	56.5	534.5	72.4	* 3.3	75.6	610.1	240.4	850.6	12.4	71.7
1993	462.6	52.1	514.6	76.9	* 4.0	80.9	595.5	262.5	858.0	13.6	69.4
1994—											
June	465.9	58.1	524.1	69.6	* 4.2	73.8	597.9	267.3	865.2	12.3	69.1
July	468.3	62.6	530.9	63.9	* 3.5	67.4	598.3	267.7	866.0	11.3	69.1
August	465.7	61.6	527.4	60.7	* 3.3	64.0	591.4	275.4	866.8	10.8	68.2
1995											
May	498.1	59.0	557.1	56.4	* 4.4	60.9	618.0	261.7	879.7	9.9	70.3
June	501.0	62.3	563.3	49.3	* 5.2	54.4	617.7	263.5	881.2	8.8	70.1
July	504.0	58.6	562.6	50.0	* 5.1	55.1	617.7	265.2	882.9	8.9	70.0
August	493.3	71.5	564.8	51.1	* 4.7	55.8	620.6	264.0	884.6	9.0	70.2
MARRIED FEMALES											
August—											
1991	127.7	117.5	245.2	8.3	* 3.9	12.2	257.4	270.9	528.3	4.7	48.7
1992	114.4	126.8	241.2	11.9	5.7	17.7	258.8	268.8	527.6	6.8	49.0
1993	116.6	121.1	237.7	12.3	* 4.4	17.6	255.3	262.2	517.5	6.9	49.3
1994—											
June	135.4	115.0	250.4	14.6	* 5.0	19.6	269.9	281.2	551.2	7.3	49.0
July	132.0	117.1	249.2	13.1	* 4.9	18.0	267.1	273.4	540.6	6.7	49.4
August	129.7	113.2	242.9	12.6	* 4.9	17.5	260.3	277.4	537.7	6.7	48.4
1995											
May	136.5	130.2	266.6	6.0	* 5.0	11.0	277.6	278.3	555.9	4.0	49.9
June	141.9	136.1	278.0	8.9	5.6	14.5	292.5	267.1	559.7	5.0	52.3
July	140.5	134.5	275.0	8.7	* 3.2	11.9	286.9	269.0	555.8	4.1	51.6
August	140.3	125.6	265.8	10.8	* 4.1	14.8	280.7	262.2	542.9	5.3	51.7
ALL FEMALES											
August—											
1991	204.0	161.1	365.1	27.4	9.5	36.8	401.9	456.7	858.6	9.2	46.8
1992	190.6	176.7	367.3	32.4	13.0	45.4	412.7	455.5	868.2	11.0	47.5
1993	190.4	175.7	366.1	29.6	11.0	40.6	406.7	470.7	877.5	10.0	46.4
1994—											
June	200.6	163.8	364.4	37.2	11.6	48.8	413.2	473.1	886.3	11.8	46.6
July	201.8	171.4	373.2	31.9	12.5	44.4	417.6	469.7	887.3	10.6	47.1
August	197.4	163.3	360.7	35.4	10.1	45.4	406.1	482.1	888.2	11.2	45.7
1995											
May	211.1	192.9	404.0	21.9	11.5	33.4	437.4	462.8	900.3	7.6	48.6
June	210.0	199.9	409.9	21.9	10.4	32.3	442.2	459.5	901.7	7.3	49.0
July	210.2	200.3	410.5	22.1	7.8	30.0	440.5	463.0	903.5	6.8	48.8
August	213.9	194.5	408.4	25.3	13.2	38.5	446.9	458.4	905.3	8.6	49.4
PERSONS											
August—											
1991	705.7	206.1	911.9	85.9	13.0	98.9	1,010.7	690.6	1,701.3	9.8	59.4
1992	668.6	233.2	901.8	104.7	16.3	121.1	1,022.9	695.9	1,718.8	11.8	59.5
1993	653.0	227.7	880.7	106.5	14.9	121.5	1,002.2	733.3	1,735.5	12.1	57.7
1994—											
June	666.5	221.9	888.5	106.8	15.8	122.6	1,011.0	740.5	1,751.5	12.1	57.7
July	670.1	234.0	904.1	95.8	16.0	111.8	1,015.9	737.4	1,753.3	11.0	57.9
August	663.1	224.9	888.0	96.1	13.3	109.5	997.5	757.5	1,755.0	11.0	56.8
1995—											
May	709.3	251.9	961.2	78.3	16.0	94.3	1,055.5	724.5	1,779.9	8.9	59.3
June	711.1	262.2	973.2	71.2	15.6	86.7	1,060.0	722.9	1,782.9	8.2	59.5
July	714.3	258.9	973.1	72.1	12.9	85.0	1,058.2	728.2	1,786.4	8.0	59.2
August	707.2	266.0	973.2	76.3	18.0	94.3	1,067.5	722.4	1,789.9	8.8	59.6

TABLE 18. LABOUR FORCE STATUS (a), REGIONS OF NSW

	Month	Employed ('000)	Unemployed ('000)	Labour force ('000)	Not in labour force ('000)	Unemp- loyment rate (per cent)	Partici- pation rate (per cent)
INNER SYDNEY AND INNER WESTERN SYDNEY (SRs)							
MALES	1994 -						
	August	108.5	10.7	119.2	46.6	9.0	71.9
	1995						
	June	111.8	6.8	118.6	48.0	5.7	71.2
	July	115.3	5.2	120.5	46.4	4.3	72.2
	August	111.7	5.2	116.9	50.7	4.4	69.7
FEMALES	1994 -						
	August	85.3	5.5	90.8	79.2	6.1	53.4
	1995						
	June	87.2	4.6	91.8	79.2	5.0	53.7
	July	90.3	5.3	95.6	71.2	5.6	57.3
	August	86.0	4.9	90.9	78.8	5.4	53.6
PERSONS	1994 -						
	August	193.8	16.2	209.9	125.8	7.7	62.5
	1995 -						
	June	199.0	11.4	210.4	127.2	5.4	62.3
	July	205.6	10.5	216.1	117.6	4.9	64.8
	August	197.7	10.1	207.8	129.6	4.8	61.6
INNER SYDNEY (SR)							
MALES	1994 -						
	August	70.7	7.7	78.3	31.9	9.8	71.1
	1995 -						
	June	70.9	4.1	75.0	31.5	5.5	70.4
	July	71.4	* 3.4	74.7	31.7	* 4.5	70.2
	August	68.5	* 3.3	71.9	34.5	* 4.6	67.6
FEMALES	1994 -						
	August	46.9	* 3.6	50.5	44.2	* 7.1	53.3
	1995 -						
	June	56.0	* 3.3	59.4	42.0	* 5.6	58.5
	July	58.7	* 3.8	62.5	39.7	* 6.1	61.2
	August	56.2	* 3.4	59.6	44.4	* 5.7	57.3
PERSONS	1994 -						
	August	117.6	11.3	128.8	76.0	8.7	62.9
	1995 -						
	June	126.9	7.4	134.3	73.5	5.5	64.6
	July	130.1	7.2	137.3	71.4	5.2	65.8
	August	124.8	6.7	131.4	78.9	5.1	62.5
EASTERN SUBURBS (SR)							
MALES	1994 -						
	August	59.3	8.0	67.3	30.9	11.9	68.6
	1995						
	June	74.6	* 2.8	77.4	24.8	* 3.6	75.8
	July	74.7	* 2.7	77.4	26.5	* 3.5	74.5
	August	73.3	4.6	77.9	26.3	5.9	74.7
FEMALES	1994 -						
	August	47.0	* 2.8	49.8	46.3	* 5.6	51.9
	1995 -						
	June	57.0	* 2.5	59.6	44.3	* 4.3	57.3
	July	58.1	* 2.4	60.6	44.8	* 4.0	57.5
	August	58.0	* 1.5	59.5	40.8	* 2.6	59.3
PERSONS	1994 -						
	August	106.4	10.8	117.2	77.1	9.2	60.3
	1995 -						
	June	131.7	5.3	137.0	69.1	3.9	66.5
	July	132.8	5.1	137.9	71.3	3.7	65.9
	August	131.2	6.2	137.4	67.2	4.5	67.2

TABLE 18. LABOUR FORCE STATUS (a), REGIONS OF NSW—continued

	Month	Employed (^{'000})	Unemployed (^{'000})	Labour force (^{'000})	Not in labour force (^{'000})	Unemp- loyment rate (per cent)	Partici- pation rate (per cent)
ST GEORGE-SUTHERLAND (SR)							
MALES	1994— August	114.9	7.4	122.4	41.8	6.1	74.6
	1995— June	120.7	4.7	125.4	38.5	3.7	76.5
	July	121.0	3.7	124.8	37.8	3.0	76.8
	August	117.9	* 3.2	121.2	38.4	* 2.6	75.9
FEMALES	1994— August	96.6	4.8	101.4	80.2	4.7	55.9
	1995— June	100.4	* 2.4	102.8	72.6	* 2.3	58.6
	July	94.8	* 2.4	97.3	71.3	* 2.5	57.7
	August	96.6	* 2.9	99.5	75.4	* 2.9	56.9
PERSONS	1994— August	211.6	12.2	223.8	121.9	5.5	64.7
	1995— June	221.1	7.1	228.2	111.1	3.1	67.2
	July	215.9	6.1	222.0	109.0	2.8	67.1
	August	214.5	6.1	220.6	113.9	2.8	66.0
CANTERBURY-BANKSTOWN (SR)							
MALES	1994— August	73.3	9.9	83.2	33.5	11.9	71.3
	1995— June	81.0	7.6	88.7	34.9	8.6	71.7
	July	80.8	8.6	89.4	33.7	9.6	72.6
	August	76.9	8.2	85.1	34.8	9.6	70.9
FEMALES	1994— August	49.9	4.7	54.5	63.1	8.6	46.4
	1995— June	51.6	6.7	58.3	60.4	11.5	49.1
	July	51.9	3.8	55.7	63.1	6.8	46.9
	August	51.0	4.3	55.3	59.1	7.8	48.3
PERSONS	1994— August	123.2	14.6	137.8	96.6	10.6	58.8
	1995— June	132.6	14.3	147.0	95.3	9.7	60.7
	July	132.7	12.4	145.1	96.8	8.5	60.0
	August	127.9	12.5	140.3	93.9	8.9	59.9
FAIRFIELD-LIVERPOOL AND OUTER SOUTH WESTERN SYDNEY (SRs)							
MALES	1994— August	136.4	17.6	154.0	43.2	11.4	78.1
	1995— June	128.8	19.4	148.2	49.6	13.1	74.9
	July	128.9	19.5	148.5	46.6	13.2	76.1
	August	129.4	19.5	148.8	46.0	13.1	76.4
FEMALES	1994— August	95.8	9.3	105.2	92.8	8.9	53.1
	1995— June	88.9	11.1	100.0	92.4	11.1	52.0
	July	88.3	10.4	98.6	98.9	10.5	49.9
	August	88.2	13.6	101.8	93.9	13.4	52.0
PERSONS	1994— August	232.2	26.9	259.2	136.0	10.4	65.6
	1995— June	217.7	30.5	248.2	142.0	12.3	63.6
	July	217.2	29.9	247.1	145.5	12.1	62.9
	August	217.5	33.1	250.6	139.8	13.2	64.2

TABLE 18. LABOUR FORCE STATUS (a), REGIONS OF NSW—continued

Month		Employed ('000)	Unemployed ('000)	Labour force ('000)	Not in labour force ('000)	Unemp- loyment rate (per cent)	Partici- pation rate (per cent)
FAIRFIELD LIVERPOOL (SR)							
MALES	1994— August	74.9	15.0	89.9	28.6	16.7	75.8
	1995— June	71.7	13.3	85.0	30.4	15.6	73.7
	July	72.1	12.5	84.6	28.9	14.8	74.5
	August	72.5	13.1	85.6	27.2	15.3	75.9
FEMALES	1994— August	53.2	7.4	60.7	57.7	12.3	51.2
	1995— June	50.8	8.3	59.2	59.5	14.1	49.8
	July	49.3	6.6	55.9	64.1	11.8	46.6
	August	48.7	9.6	58.3	62.2	16.5	48.4
PERSONS	1994— August	128.1	22.5	150.6	86.4	14.9	63.5
	1995— June	122.6	21.6	144.2	89.9	15.0	61.6
	July	121.3	19.1	140.4	93.0	13.6	60.2
	August	121.2	22.7	143.9	89.4	15.8	61.7
CENTRAL WESTERN SYDNEY (SR)							
MALES	1994— August	56.8	6.1	63.0	33.2	9.8	65.5
	1995— June	49.9	8.5	58.4	24.6	14.6	70.3
	July	48.8	8.3	57.1	25.3	14.5	69.3
	August	48.2	8.3	56.5	24.8	14.7	69.5
FEMALES	1994— August	40.2	6.2	46.3	61.8	13.3	42.9
	1995— June	37.0	4.7	41.7	51.8	11.2	44.6
	July	36.8	3.7	40.6	52.2	9.2	43.7
	August	37.8	3.8	41.6	50.9	9.2	45.0
PERSONS	1994— August	97.0	12.3	109.3	95.0	11.3	53.5
	1995— June	86.9	13.2	100.1	76.4	13.2	56.7
	July	85.6	12.0	97.6	77.6	12.3	55.7
	August	86.0	12.1	98.1	75.8	12.3	56.4
OUTER WESTERN SYDNEY (SR)							
MALES	1994— August	79.3	7.0	86.3	25.3	8.1	77.3
	1995— June	88.2	7.5	95.6	23.4	7.8	80.3
	July	93.5	6.0	99.5	22.1	6.0	81.8
	August	91.1	8.4	99.6	25.6	8.5	79.6
FEMALES	1994— August	56.7	5.6	62.4	50.6	9.0	55.2
	1995— June	72.7	5.8	78.5	55.4	7.4	58.6
	July	73.1	5.1	78.2	56.0	6.6	58.3
	August	71.6	4.4	76.1	51.1	5.8	59.8
PERSONS	1994— August	136.1	12.6	148.7	76.0	8.5	66.2
	1995— June	160.8	13.3	174.1	78.8	7.6	68.8
	July	166.6	11.1	177.7	78.0	6.3	69.5
	August	162.8	12.9	175.7	76.6	7.3	69.6

TABLE 18. LABOUR FORCE STATUS (a), REGIONS OF NSW—continued

	Month	Employed ('000)	Unemployed ('000)	Labour force ('000)	Not in labour force ('000)	Unemp- loyment rate (per cent)	Partici- pation rate (per cent)
BLACKTOWN-BAULKHAM HILLS (SR)							
MALES	1994— August	92.3	7.1	99.4	35.2	7.1	73.9
	1995— June	93.1	7.9	100.9	25.7	7.8	79.7
	July	97.2	5.8	103.0	27.3	5.6	79.0
	August	101.0	6.0	107.0	26.2	5.6	80.3
FEMALES	1994— August	72.4	2.5	74.9	62.9	3.3	54.3
	1995— June	74.5	3.7	78.3	57.0	4.8	57.9
	July	72.4	4.3	76.8	63.4	5.7	54.8
	August	75.3	4.0	79.3	62.8	5.0	55.8
PERSONS	1994— August	164.7	9.5	174.3	98.1	5.5	64.0
	1995— June	167.6	11.6	179.2	82.7	6.5	68.4
	July	169.7	10.1	179.8	90.7	5.6	66.5
	August	176.3	9.9	186.2	89.0	5.3	67.7
LOWER NORTHERN SYDNEY (SR)							
MALES	1994— August	70.2	* 3.9	74.1	22.5	* 5.2	76.7
	1995— June	79.6	* 3.8	83.4	26.5	* 4.6	75.9
	July	80.8	* 4.0	84.8	28.1	* 4.7	75.1
	August	78.6	* 3.7	82.3	25.3	* 4.4	76.5
FEMALES	1994— August	64.4	* 2.2	66.6	50.5	* 3.2	56.9
	1995— June	73.2	* 1.9	75.1	47.8	* 2.5	61.1
	July	69.6	* 3.2	72.8	49.1	* 4.3	59.7
	August	67.8	* 3.1	70.9	51.9	* 4.4	57.7
PERSONS	1994— August	134.7	6.0	140.7	72.9	4.3	65.9
	1995— June	152.8	5.7	158.5	74.4	3.6	68.1
	July	150.4	7.2	157.6	77.2	4.6	67.1
	August	146.4	6.8	153.2	77.3	4.4	66.5
HORNSBY-KU-RING-GAI (SR)							
MALES	1994— August	77.5	* 2.8	80.3	22.7	* 3.5	78.0
	1995— June	73.1	* 2.3	75.4	29.2	* 3.0	72.1
	July	70.3	* 2.1	72.4	26.4	* 2.9	73.3
	August	65.6	* 2.1	67.7	28.8	* 3.1	70.1
FEMALES	1994— August	52.4	* 2.8	55.2	45.5	* 5.1	54.8
	1995— June	55.2	* 1.4	56.6	46.3	* 2.6	55.0
	July	54.8	* 1.5	56.3	43.7	* 2.7	56.3
	August	51.3	* 1.9	53.2	46.7	* 3.5	53.3
PERSONS	1994— August	129.9	5.6	135.5	68.2	4.1	66.5
	1995— June	128.3	* 3.7	132.0	75.4	* 2.8	63.6
	July	125.1	* 3.6	128.7	70.0	* 2.8	64.8
	August	116.9	4.0	120.9	75.5	3.3	61.6

TABLE 18. LABOUR FORCE STATUS (a), REGIONS OF NSW—continued

Month		Employed ('000)	Unemployed ('000)	Labour force ('000)	Not in labour force ('000)	Unemp- loyment rate (per cent)	Partici- pation rate (per cent)
NORTHERN BEACHES (SR) (b)							
MALES	1994—						
	August	69.2	2.7	71.9	15.6	3.7	82.2
	1995—						
	June	56.9	2.5	59.4	20.2	4.3	74.6
	July	57.3	* 1.8	59.1	22.4	* 3.1	72.5
FEMALES	August	60.1	* 2.1	62.2	21.9	* 3.4	73.9
	1994—						
	August	54.1	2.2	56.3	35.5	3.9	61.3
	1995—						
	June	45.1	2.8	47.9	35.7	5.8	57.3
PERSONS	July	48.3	* 1.3	49.6	37.0	* 2.6	57.3
	August	48.6	2.9	51.5	39.4	5.6	56.6
	1994—						
	August	123.4	4.9	128.3	51.2	3.8	71.5
	1995—						
	June	102.0	5.3	107.4	56.0	5.0	65.7
	July	105.6	3.1	108.7	59.4	2.9	64.7
	August	108.7	5.0	113.7	61.3	4.4	65.0
GOSFORD-WYONG (SR)							
MALES	1994—						
	August	54.5	6.5	61.0	33.6	10.7	64.5
	1995—						
	June	54.5	6.0	60.4	38.6	9.9	61.0
	July	50.7	8.1	58.9	38.7	13.8	60.3
FEMALES	August	52.1	7.5	59.6	43.3	12.5	57.9
	1994—						
	August	39.0	7.4	46.4	51.7	15.9	47.3
	1995—						
	June	40.8	4.8	45.6	59.5	10.5	43.4
PERSONS	July	39.5	6.7	46.2	60.3	14.4	43.4
	August	40.1	6.3	46.4	62.6	13.5	42.6
	1994—						
	August	93.5	13.9	107.4	85.3	13.0	55.8
	1995—						
	June	95.2	10.8	106.0	98.1	10.2	51.9
	July	90.2	14.8	105.0	99.0	14.1	51.5
	August	92.2	13.7	106.0	105.9	13.0	50.0
HUNTER (SR)							
MALES	1994—						
	August	117.7	18.2	135.9	65.6	13.4	67.4
	1995—						
	June	125.8	13.7	139.5	68.2	9.8	67.2
	July	123.3	16.4	139.7	66.7	11.8	67.7
FEMALES	August	122.4	13.9	136.3	67.8	10.2	66.8
	1994—						
	August	82.0	12.2	94.2	116.3	13.0	44.7
	1995—						
	June	89.6	6.3	95.9	111.0	6.6	46.3
PERSONS	July	90.4	7.1	97.5	116.8	7.3	45.5
	August	91.3	8.7	100.0	115.6	8.7	46.4
	1994—						
	August	199.7	30.4	230.1	181.9	13.2	55.8
	1995—						
	June	215.3	20.0	235.4	179.1	8.5	56.8
	July	213.7	23.5	237.2	183.5	9.9	56.4
	August	213.7	22.6	236.3	183.5	9.6	56.3

TABLE 18. LABOUR FORCE STATUS (a), REGIONS OF NSW—continued

	Month	Employed (<i>'000</i>)	Unemployed (<i>'000</i>)	Labour force (<i>'000</i>)	Not in labour force (<i>'000</i>)	Unemp- loyment rate (per cent)	Partici- pation rate (per cent)
NEWCASTLE (SRS)							
MALES	1994— August	98.8	17.0	115.8	59.2	14.7	66.2
	1995— June	107.4	12.3	119.7	60.4	10.3	66.5
	July	102.7	15.1	117.7	55.9	12.8	67.8
	August	101.9	13.3	115.3	57.8	11.6	66.6
FEMALES	1994— August	72.5	10.4	82.8	102.1	12.5	44.8
	1995— June	80.0	5.3	85.3	98.1	6.3	46.5
	July	80.2	6.1	86.3	103.4	7.0	45.5
	August	80.8	8.0	88.8	100.4	9.0	46.9
PERSONS	1994— August	171.3	27.4	198.7	161.3	13.8	55.2
	1995— June	187.3	17.7	205.0	158.5	8.6	56.4
	July	182.9	21.1	204.0	159.3	10.4	56.1
	August	182.8	21.3	204.1	158.2	10.4	56.3
ILLAWARRA AND SOUTH EASTERN (SRs)							
MALES	1994— August	134.4	14.0	148.5	68.3	9.4	68.5
	1995— June	145.2	16.8	162.0	66.2	10.4	71.0
	July	144.8	16.1	160.8	68.5	10.0	70.1
	August	148.1	18.4	166.4	68.2	11.0	70.9
FEMALES	1994— August	90.4	13.8	104.2	118.8	13.2	46.7
	1995— June	101.7	10.9	112.6	117.2	9.7	49.0
	July	108.3	8.7	117.0	116.8	7.4	50.1
	August	101.6	11.5	113.2	122.5	10.2	48.0
PERSONS	1994— August	224.9	27.8	252.6	187.1	11.0	57.4
	1995— June	246.9	27.7	274.6	183.4	10.1	60.0
	July	253.1	24.7	277.8	185.2	8.9	60.0
	August	249.7	29.9	279.6	190.7	10.7	59.5
ILLAWARRA (SR)							
MALES	1994— August	88.2	9.7	97.9	44.5	9.9	68.8
	1995— June	97.3	12.7	110.0	42.1	11.5	72.3
	July	93.1	11.4	104.5	45.0	10.9	69.9
	August	95.1	15.0	110.2	46.6	13.6	70.3
FEMALES	1994— August	56.7	9.0	65.7	88.2	13.7	42.7
	1995— June	64.8	9.3	74.1	84.0	12.6	46.9
	July	67.4	7.0	74.5	87.0	9.4	46.1
	August	63.1	8.7	71.8	90.6	12.1	44.2
PERSONS	1994— August	144.9	18.7	163.6	132.7	11.4	55.2
	1995— June	162.2	22.0	184.2	126.0	11.9	59.4
	July	160.5	18.4	178.9	132.0	10.3	57.5
	August	158.3	23.7	181.9	137.3	13.0	57.0

TABLE 18. LABOUR FORCE STATUS (a), REGIONS OF NSW—continued

Month		Employed ('000)	Unemployed ('000)	Labour force ('000)	Not in labour force ('000)	Unemp- loyment rate (per cent)	Partici- pation rate (per cent)
WOLLONGONG (SRS)							
MALES	1994— August	67.7	7.5	75.3	31.9	10.0	70.2
	1995— June	77.9	8.9	86.7	27.0	10.2	76.2
	July	72.2	8.2	80.4	29.1	10.3	73.4
	August	74.6	11.3	85.9	29.7	13.1	74.3
FEMALES	1994 August	40.9	5.5	46.4	63.2	11.9	42.3
	1995— June	49.9	7.2	57.1	56.7	12.6	50.2
	July	50.8	5.0	55.8	58.0	9.0	49.0
	August	46.8	6.8	53.6	58.5	12.7	47.8
PERSONS	1994— August	108.6	13.0	121.7	95.1	10.7	56.1
	1995— June	127.8	16.0	143.8	83.7	11.1	63.2
	July	122.9	13.2	136.2	87.1	9.7	61.0
	August	121.4	18.1	139.4	88.1	13.0	61.3
RICHMOND-TWEED AND MID-NORTH COAST (SRs)							
MALES	1994 August	88.2	15.1	103.3	59.0	14.7	63.6
	1995 June	93.8	9.5	103.4	56.8	9.2	64.5
	July	95.4	9.7	105.1	59.5	9.2	63.8
	August	96.5	7.8	104.3	61.0	7.5	63.1
FEMALES	1994— August	65.5	8.7	74.1	95.1	11.7	43.8
	1995 June	73.9	8.6	82.5	94.7	10.4	46.6
	July	72.9	7.0	79.9	95.1	8.8	45.6
	August	69.8	5.7	75.5	94.9	7.6	44.3
PERSONS	1994 August	153.6	23.8	177.4	154.1	13.4	53.5
	1995 June	167.8	18.1	185.9	151.5	9.8	55.1
	July	168.2	16.7	185.0	154.7	9.0	54.5
	August	166.3	13.5	179.8	155.9	7.5	53.6
NORTHERN, FAR WEST NORTH WESTERN AND CENTRAL WEST (SRs) (c)							
MALES	1994 August	122.4	10.9	133.4	54.3	8.2	71.1
	1995— June	121.4	9.2	130.6	45.2	7.1	74.3
	July	122.1	9.2	131.3	43.3	7.0	75.2
	August	120.2	9.4	129.6	43.2	7.2	75.0
FEMALES	1994— August	77.5	7.7	85.3	95.7	9.1	47.1
	1995— June	89.3	* 4.5	93.8	87.0	* 4.8	51.9
	July	86.1	* 4.3	90.3	83.3	* 4.7	52.0
	August	88.0	9.1	97.1	82.0	9.3	54.2
PERSONS	1994— August	200.0	18.7	218.7	150.0	8.5	59.3
	1995 June	210.7	13.7	224.5	132.2	6.1	62.9
	July	208.2	13.4	221.7	126.6	6.1	63.6
	August	208.2	18.4	226.6	125.2	8.1	64.4

TABLE 18. LABOUR FORCE STATUS (a), REGIONS OF NSW—continued

Month		Employed (<i>'000</i>)	Unemployed (<i>'000</i>)	Labour force (<i>'000</i>)	Not in labour force (<i>'000</i>)	Unemp- loyment rate (per cent)	Partici- pation rate (per cent)
MURRAY-MURRUMBIDGEE (SR)							
MALES	1994— August	60.9	5.1	66.0	25.3	1.7	72.3
	1995— June	71.4	* 3.6	74.9	24.6	* 4.7	75.3
	July	70.2	* 3.4	73.5	23.3	* 4.6	75.9
	August	72.0	5.0	77.1	21.1	6.5	78.5
FEMALES	1994— August	43.1	* 2.6	45.8	51.4	* 5.7	47.1
	1995— June	52.3	* 1.4	53.6	45.8	* 2.5	53.9
	July	50.3	* 2.2	52.5	46.2	* 4.3	53.2
	August	55.0	* 2.9	57.9	40.3	* 5.0	59.0
PERSONS	1994— August	104.0	7.7	111.7	76.7	6.9	59.3
	1995— June	123.6	4.9	128.6	70.4	3.8	64.6
	July	120.4	5.6	126.0	69.5	4.4	64.4
	August	127.1	7.9	135.0	61.3	5.9	68.8

(a) While the Labour Force Survey is designed primarily to produce reliable estimates at the national and State/Territory level, it also delivers estimates for a number of regions within States. As with national and State estimates, regional labour force estimates are subject to sampling error. Since estimates for regions are components of corresponding estimates at the State level — and are thus based on a considerably smaller sample size — they are subject to higher relative standard error. Care should therefore be taken in interpretation of regional estimates, particularly month to month movements. Tables of standard errors are included in the Technical Note on pages 43–47 of this publication. (b) Previously Manly–Warringah (SR). (c) Excludes components of Far West (SD). These are published as part of Balance of NSW (MSR).

**TABLE 19. EMPLOYED PERSONS: INDUSTRY (a) AND OCCUPATION
SYDNEY (MSR) AND BALANCE OF NSW (MSR), AUGUST 1995
(^{'000})**

<i>Industry division and Major occupation group</i>	<i>Males</i>	<i>Females</i>	<i>Persons</i>
SYDNEY (MSR)			
Industry—			
Agriculture, forestry and fishing	8.1	6.0	14.1
Mining	*3.6	*0.0	*3.6
Manufacturing	174.4	74.4	248.8
Electricity, gas and water supply	14.9	*3.0	17.9
Construction	116.3	17.2	133.5
Wholesale trade	95.1	50.3	145.4
Retail trade	116.6	121.0	237.6
Accommodation, cafes and restaurants	44.9	37.8	82.7
Transport and storage	67.9	22.7	90.7
Communication services	25.0	10.5	35.5
Finance and insurance	50.9	57.7	108.5
Property and business services	112.0	95.8	207.9
Government administration and defence	40.4	24.9	65.3
Education	39.5	78.8	118.3
Health and community services	36.6	121.8	158.4
Cultural and recreational services	27.3	19.9	47.2
Personal and other services	32.5	30.5	62.9
Occupation—			
Managers and administrators	125.8	36.0	161.8
Professionals	167.9	131.3	299.2
Para-professionals	47.8	48.7	96.6
Tradespersons	220.0	22.1	242.1
Clerks	92.2	265.0	357.2
Salespersons and personal service workers	125.1	175.3	300.4
Plant and machine operators, and drivers	82.3	10.4	92.8
Labourers and related workers	144.9	83.4	228.2
Total employed	1,006.0	772.3	1,778.3
BALANCE OF NSW (MSR)			
Industry—			
Agriculture, forestry and fishing	69.9	27.1	97.0
Mining	21.8	*0.6	22.4
Manufacturing	94.8	24.1	118.9
Electricity, gas and water supply	8.0	*2.3	10.4
Construction	64.5	11.5	76.0
Wholesale trade	29.9	17.5	47.4
Retail trade	69.8	78.6	148.5
Accommodation, cafes and restaurants	24.3	33.5	57.8
Transport and storage	33.2	*4.7	37.8
Communication services	10.2	*5.0	15.2
Finance and insurance	8.2	15.2	23.3
Property and business services	30.1	35.1	65.2
Government administration and defence	31.7	10.3	42.0
Education	21.5	46.9	68.4
Health and community services	25.8	68.8	94.6
Cultural and recreational services	6.1	8.8	14.9
Personal and other services	15.1	18.4	33.5
Occupation—			
Managers and administrators	87.5	30.8	118.3
Professionals	57.7	45.9	103.5
Para-professionals	33.5	31.2	64.7
Tradespersons	122.3	18.4	140.7
Clerks	22.7	109.0	131.7
Salespersons and personal service workers	45.9	113.1	159.0
Plant and machine operators, and drivers	74.3	9.2	83.5
Labourers and related workers	120.9	50.8	171.7
Total employed	564.8	408.4	973.2

(a) Industry data are now classified according to the Australian and New Zealand Standard Industrial Classification. See the Explanatory Notes for more details.

TABLE 20. LABOUR FORCE STATUS: ORIGINAL SERIES, ACT

Month	Employed		Unemployed			Labour force ('000)	Not in labour force ('000)	Civilian population aged 15 and over ('000)	Unemployment rate (per cent)	Participation rate (per cent)	
	Full-time workers ('000)	Part-time workers ('000)	Total ('000)	Looking for full-time work ('000)	Looking for part-time work ('000)						
MALES											
August 1991	68.6	9.5	78.2	3.4	1.6	5.0	83.2	20.6	103.8	6.0	80.1
1992	70.0	8.4	78.4	4.3	* 1.2	5.5	83.8	22.6	106.5	6.5	78.7
1993	70.0	10.7	80.7	5.6	1.2	6.8	87.5	22.0	109.6	7.8	79.9
1994—											
June	72.9	10.4	83.4	5.0	1.0	6.0	89.4	22.4	111.8	6.7	80.0
July	73.1	10.3	83.4	4.6	1.2	5.7	89.1	22.8	111.9	6.4	79.7
August	71.3	11.4	82.7	4.9	* 0.8	5.8	88.5	23.6	112.0	6.5	79.0
1995—											
May	72.3	9.6	81.8	6.3	1.6	7.9	89.8	23.0	112.8	8.8	79.6
June	72.1	11.3	83.5	5.6	1.1	6.7	90.2	22.7	112.9	7.4	79.9
July	73.2	12.4	85.6	5.0	1.6	6.7	92.3	20.7	113.0	7.2	81.7
August	72.5	12.7	85.2	6.3	1.3	7.7	92.9	20.2	113.1	8.3	82.1
MARRIED FEMALES											
August 1991	25.7	14.5	40.3	* 0.6	* 1.0	1.5	41.8	21.5	63.3	3.7	66.0
1992	24.9	15.8	40.7	* 1.2	1.4	2.6	43.3	20.7	63.9	6.0	67.7
1993	26.1	15.0	41.1	1.3	* 0.3	1.6	42.7	22.3	65.0	3.7	65.6
1994—											
June	26.7	14.8	41.5	1.0	* 0.8	1.8	43.3	21.3	64.5	4.2	67.0
July	26.6	16.1	42.7	* 0.9	* 0.6	1.5	44.2	20.9	65.2	3.5	67.8
August	27.1	16.2	43.2	* 0.8	* 0.8	1.6	44.8	20.5	65.3	3.6	68.7
1995—											
May	25.8	16.0	41.8	1.1	* 0.3	1.5	43.3	21.5	64.8	3.4	66.8
June	26.2	16.9	43.1	* 0.8	* 0.5	1.3	44.4	20.9	65.3	2.9	68.0
July	27.7	15.9	43.5	* 0.7	* 0.4	1.1	44.7	22.0	66.6	2.6	67.0
August	27.7	17.5	45.2	* 0.7	* 0.6	1.3	46.5	21.3	67.8	2.8	68.6
ALL FEMALES											
August 1991	44.1	21.7	65.8	2.1	2.0	4.1	69.9	40.6	110.5	5.8	63.2
1992	39.2	26.2	65.4	3.2	3.6	6.8	72.2	40.4	112.6	9.5	64.1
1993	43.7	26.7	70.4	3.1	1.3	4.4	74.8	40.0	114.8	5.9	65.2
1994—											
June	46.7	23.4	70.1	2.8	1.6	4.4	74.5	41.7	116.2	5.9	64.1
July	47.2	24.0	71.2	2.8	1.9	4.7	75.9	40.4	116.3	6.2	65.3
August	45.9	25.5	71.4	2.7	2.1	4.8	76.2	40.1	116.4	6.3	65.5
1995—											
May	44.9	27.7	72.6	2.4	1.8	4.2	76.8	40.4	117.3	5.5	65.5
June	43.9	29.6	73.5	2.6	1.4	4.1	77.5	39.9	117.4	5.2	66.0
July	45.1	27.8	72.9	2.9	1.6	4.4	77.3	40.2	117.5	5.7	65.8
August	43.5	29.6	73.2	2.5	1.9	4.4	77.6	40.0	117.6	5.7	66.0
PERSONS											
August 1991	112.7	31.3	143.9	5.5	3.6	9.1	153.0	61.2	214.2	5.9	71.4
1992	109.2	34.6	143.8	7.5	4.8	12.3	156.0	63.1	219.1	7.9	71.2
1993	113.7	37.4	151.1	8.8	2.5	11.3	162.3	62.0	224.4	6.9	72.3
1994—											
June	119.7	33.8	153.5	7.8	2.6	10.4	163.8	64.1	227.9	6.3	71.9
July	120.3	34.3	154.6	7.4	3.1	10.5	165.0	63.1	228.2	6.3	72.3
August	117.3	36.9	154.1	7.6	3.0	10.6	164.7	63.7	228.4	6.4	72.1
1995—											
May	117.2	37.3	154.4	8.7	3.4	12.2	166.6	63.4	230.0	7.3	72.4
June	116.0	41.0	157.0	8.3	2.5	10.8	167.7	62.6	230.3	6.4	72.8
July	118.2	40.2	158.5	7.9	3.2	11.1	169.6	61.0	230.5	6.5	73.6
August	116.1	42.3	158.4	8.9	3.3	12.1	170.5	60.2	230.7	7.1	73.9

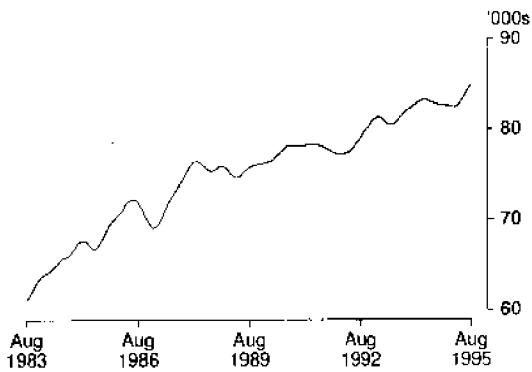
TABLE 21. LABOUR FORCE STATUS: TREND SERIES, ACT(a)

Month	Employed ('000)	Unemployed ('000)	Labour force ('000)	Unemployment rate (per cent)	Participation rate (per cent)
MALES					
August—					
1991	78.1	5.7	83.8	6.8	80.8
1992	79.0	6.8	85.8	8.0	80.6
1993	80.9	6.9	87.7	7.9	80.1
1994					
June	83.2	6.2	89.4	6.9	80.0
July	83.0	6.4	89.4	7.1	79.9
August	82.9	6.6	89.5	7.4	79.9
September	82.8	6.9	89.7	7.7	79.9
October	82.7	7.1	89.7	7.9	79.9
November	82.7	7.1	89.7	7.9	79.8
December	82.6	7.0	89.6	7.8	79.6
1995					
January	82.6	6.9	89.5	7.7	79.5
February	82.5	6.8	89.3	7.6	79.4
March	82.5	6.8	89.3	7.6	79.4
April	82.8	6.9	89.7	7.7	79.6
May	83.2	7.1	90.4	7.9	80.2
June	83.8	7.4	91.2	8.1	80.8
July	84.4	7.7	92.1	8.4	81.5
August	84.9	8.0	92.8	8.6	82.1
FEMALES					
August—					
1991	66.2	4.6	70.8	6.5	64.1
1992	65.7	6.7	72.4	9.2	64.2
1993	70.5	5.5	76.0	7.2	66.2
1994					
June	70.5	5.2	75.7	6.9	65.2
July	71.1	5.3	76.3	6.9	65.7
August	71.6	5.3	76.9	6.9	66.1
September	71.9	5.2	77.1	6.8	66.2
October	71.9	5.1	77.0	6.6	66.1
November	71.8	5.0	76.8	6.5	65.9
December	71.6	4.9	76.5	6.4	65.6
1995					
January	71.3	4.9	76.2	6.4	65.3
February	71.1	4.9	76.0	6.5	65.1
March	71.2	5.0	76.2	6.5	65.2
April	71.5	5.0	76.5	6.5	65.4
May	72.0	5.0	77.0	6.4	65.7
June	72.6	4.9	77.5	6.3	66.0
July	73.2	4.8	78.0	6.2	66.4
August	73.6	4.8	78.4	6.1	66.7
PERSONS					
August—					
1991	144.3	10.4	154.6	6.7	72.2
1992	144.7	13.5	158.2	8.5	72.2
1993	151.3	12.4	163.7	7.6	73.0
1994					
June	153.7	11.4	165.1	6.9	72.4
July	154.1	11.6	165.7	7.0	72.6
August	154.5	11.9	166.4	7.2	72.8
September	154.6	12.1	166.8	7.3	72.9
October	154.6	12.2	166.8	7.3	72.9
November	154.5	12.1	166.6	7.3	72.7
December	154.2	11.9	166.1	7.2	72.5
1995					
January	153.9	11.8	165.6	7.1	72.2
February	153.6	11.7	165.3	7.1	72.1
March	153.8	11.7	165.5	7.1	72.1
April	154.3	11.9	166.2	7.2	72.4
May	155.3	12.1	167.4	7.2	72.8
June	156.4	12.3	168.7	7.3	73.3
July	157.5	12.6	170.1	7.4	73.8
August	158.5	12.8	171.3	7.5	74.2

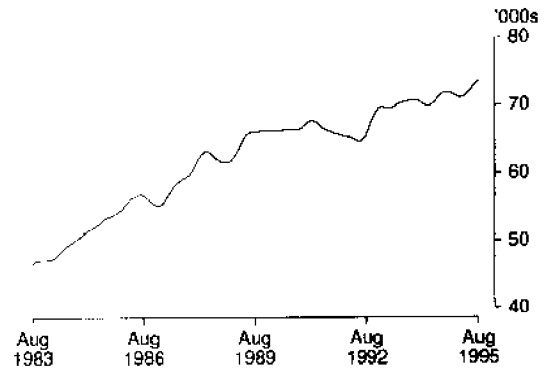
(a) See Explanatory Note 28

TREND SERIES, ACT (a)

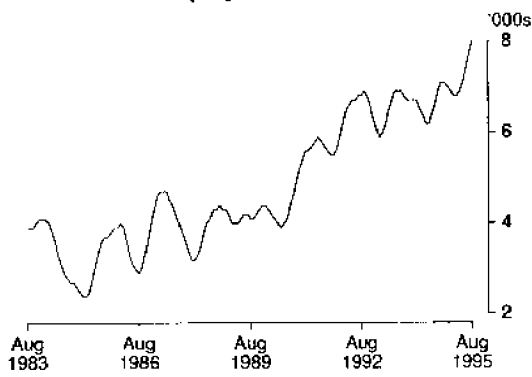
Employed males



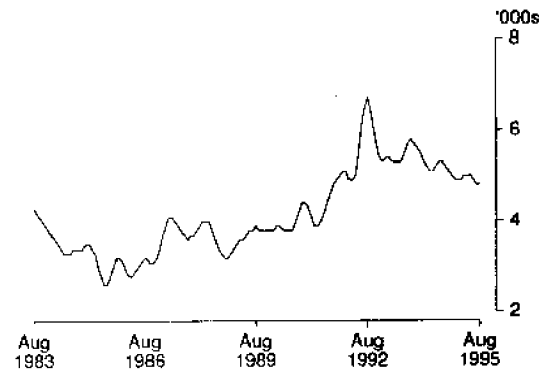
Employed females



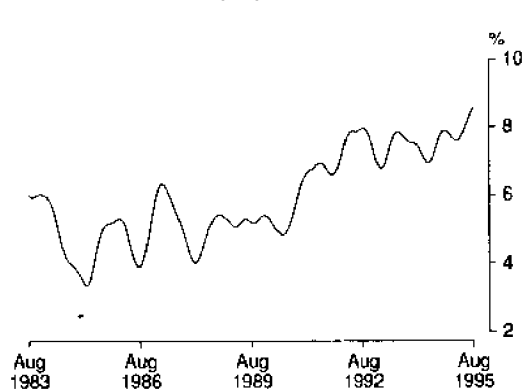
Unemployed males



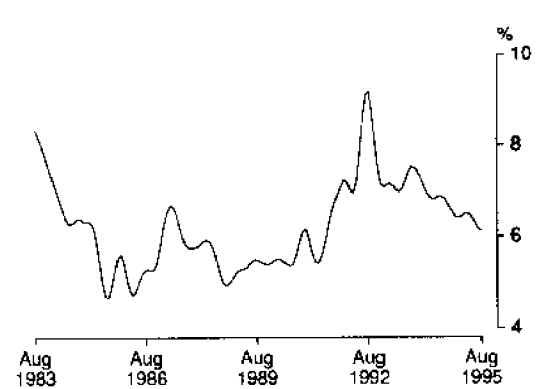
Unemployed females



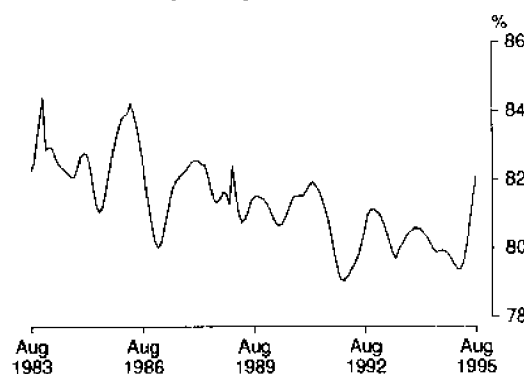
Male unemployment rate



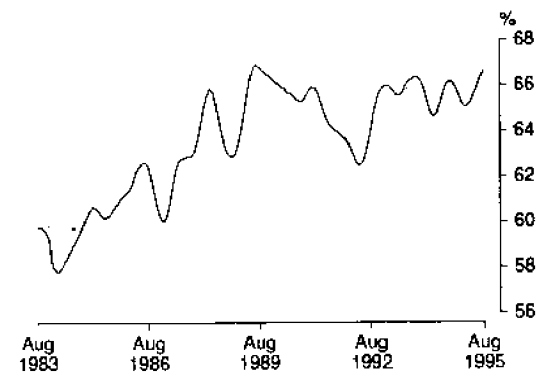
Female unemployment rate



Male participation rate



Female participation rate



(a) Comparisons between these graphs should not be made, as their vertical axes are not similarly scaled.

TABLE 22. LABOUR FORCE STATUS: AGE, ACT, AUGUST 1995

	Persons						Total
	Females			Age group (years)			
	Males	Married	Total	15-19	20-24	25 and over	
— '000 —							
Employed	85.2	45.2	73.2	11.8	23.1	123.5	158.4
Full-time workers	72.5	27.7	43.5	2.5	16.3	97.3	116.1
Part-time workers	12.7	17.5	29.6	9.2	6.9	26.2	42.3
Unemployed	7.7	1.3	4.4	3.4	2.6	6.1	12.1
Looking for full-time work	6.3	* 0.7	2.5	1.6	2.0	5.2	8.9
Looking for part-time work	1.3	* 0.6	1.9	1.8	* 0.6	* 0.9	3.3
Labour force	92.9	46.5	77.6	15.1	25.7	129.6	170.5
Not in labour force	20.2	21.3	40.0	8.8	4.4	47.0	60.2
Aged 15-19 attending school	3.6	* 0.0	3.4	7.0	7.0
Civilian population	113.1	67.8	117.6	23.9	30.1	176.6	230.7
per cent —							
Unemployment rate	8.3	2.8	5.7	22.4	10.1	4.7	7.1
Looking for full-time work	8.0	* 2.3	5.5	39.3	10.9	5.1	7.1
Participation rate	82.1	68.6	66.0	63.3	85.4	73.4	73.9
Employment/population ratio	75.3	66.7	62.2	49.1	76.8	69.9	68.6
— number —							
Average weekly hours worked by employed persons	39.1	29.9	28.8	16.5	31.5	36.6	34.3
Average duration of unemployment (weeks)	35.4	* 17.6	29.5	18.5	29.3	43.1	33.3

TABLE 23. NON-INSTITUTIONALISED PERSONS(a): LABOUR FORCE STATUS, BIRTHPLACE AND YEAR OF ARRIVAL, ACT, AUGUST 1995
(^{'000})

	Employed	Unemployed	Not in labour force	Labour force	Civilian population aged 15 and over
<i>Born in Australia</i>	120.7	9.1	39.8	129.8	169.6
<i>Born outside Australia</i>	37.7	3.0	18.6	40.7	59.4
Arrived before 1966	12.4	* 0.4	8.1	12.8	20.9
Arrived 1966-1970	5.7	* 0.2	2.2	5.8	8.0
Arrived 1971-1975	4.6	* 0.3	1.3	4.9	6.3
Arrived 1976-1980	4.2	* 0.2	1.5	4.5	6.0
Arrived 1981-1985	4.8	* 0.6	1.6	5.4	7.0
Arrived 1986-1990	3.5	* 0.7	1.3	4.2	5.4
Arrived 1991 to survey date	2.4	* 0.7	2.7	3.1	5.8
<i>Main English speaking countries</i>	14.3	1.3	7.6	15.6	23.1
Arrived before 1966	4.6	* 0.0	3.8	4.6	8.4
Arrived 1966-1970	1.7	* 0.1	* 0.8	1.8	2.6
Arrived 1971-1975	1.8	* 0.1	* 0.5	1.8	2.4
Arrived 1976-1980	1.7	* 0.2	* 0.6	2.0	2.6
Arrived 1981-1985	1.8	* 0.3	* 0.7	2.1	2.8
Arrived 1986-1990	1.6	* 0.3	* 0.6	1.9	2.5
Arrived 1991 to survey date	1.0	* 0.4	* 0.4	1.4	1.8
<i>Other than Main English speaking countries</i>	23.4	1.8	11.1	25.2	36.2
Arrived before 1966	7.8	* 0.4	4.3	8.2	12.5
Arrived 1966-1970	3.9	* 0.1	1.4	4.0	5.4
Arrived 1971-1975	2.9	* 0.2	* 0.8	3.1	3.9
Arrived 1976-1980	2.5	* 0.0	* 0.9	2.5	3.4
Arrived 1981-1985	3.0	* 0.3	* 0.9	3.3	4.2
Arrived 1986-1990	1.8	* 0.4	* 0.6	2.3	2.9
Arrived 1991 to survey date	1.5	* 0.3	2.2	1.8	4.0
Total	158.4	12.1	58.5	170.5	228.9

(a) Excludes boarding school pupils.

TABLE 24. EMPLOYED PERSONS: INDUSTRY (a) AND OCCUPATION, ACT, AUGUST 1995
(^{'000})

<i>Industry division and Major occupation group</i>	<i>Males</i>	<i>Females</i>	<i>Persons</i>
Industry—			
Agriculture, forestry, fishing	*0.6	*0.1	*0.6
Mining	*0.2	*0.0	*0.2
Manufacturing	4.5	2.0	6.5
Electricity, gas and water supply	*0.6	*0.0	*0.6
Construction	8.7	1.8	10.6
Wholesale trade	4.2	*1.3	5.4
Retail trade	11.6	10.3	21.8
Accommodation, cafes and restaurants	4.4	5.0	9.4
Transport and storage	2.8	*1.2	4.0
Communication services	2.0	*0.8	2.8
Finance and insurance	1.8	2.5	4.3
Property and business services	9.6	6.1	15.7
Government administration and defence	21.7	16.8	38.6
Education	4.9	8.6	13.5
Health and community services	1.8	10.8	12.5
Cultural and recreational services	3.4	2.1	5.4
Personal and other services	2.4	3.9	6.3
Occupation—			
Managers and administrators	16.0	4.9	20.9
Professionals	18.5	14.0	32.5
Para-professionals	4.5	4.0	8.6
Tradespersons	14.4	2.3	16.7
Clerks	8.1	25.4	33.5
Salespersons and personal service workers	9.4	17.7	27.1
Plant and machinery operators, and drivers	5.7	*0.3	6.0
Labourers and related workers	8.6	4.5	13.1
Total employed	85.2	73.2	158.4

(a) Industry data are now classified according to the Australian and New Zealand Standard Industrial Classification. See the Explanatory Notes for more details.

EMPLOYMENT BY INDUSTRY DIVISION, ACT, AUGUST 1995

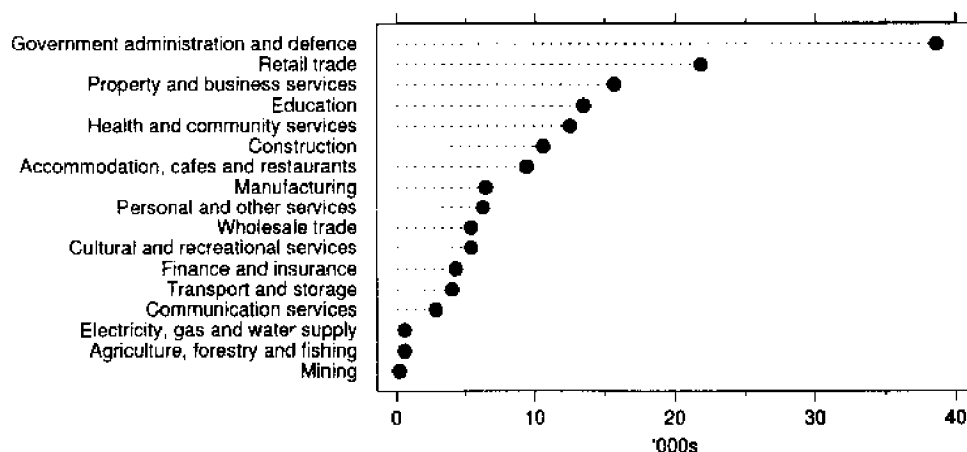
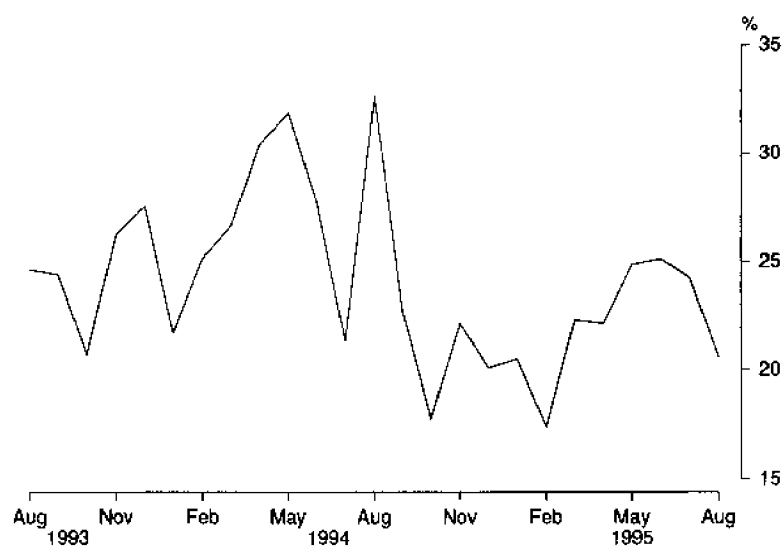


TABLE 25. LONG-TERM UNEMPLOYMENT, ACT

Month	Long-term unemployment									Long-term unemployment as a proportion of total unemployment		
	52 weeks and under 104			104 weeks and over			Total			Males (per cent)	Females (per cent)	Persons (per cent)
	Males ('000)	Females ('000)	Persons ('000)	Males ('000)	Females ('000)	Persons ('000)	Males ('000)	Females ('000)	Persons ('000)			
1994												
June	* 0.8	* 0.6	* 1.5	1.3	* 0.2	1.4	2.1	* 0.8	2.9	34.3	* 18.5	27.7
July	* 0.5	* 0.4	* 0.9	1.0	* 0.4	1.4	1.5	* 0.7	2.2	26.3	* 15.4	21.3
August	* 0.9	* 0.5	* 1.4	1.5	* 0.6	2.1	2.4	1.1	3.4	41.1	22.3	32.6
September	* 0.8	* 0.2	* 1.1	1.3	* 0.3	1.6	2.1	* 0.6	2.7	30.7	* 11.4	22.7
October	* 1.0	* 0.3	* 1.3	* 0.6	* 0.3	1.0	1.7	* 0.6	2.2	23.4	* 10.5	17.8
November	* 0.5	* 0.7	* 1.2	* 0.7	* 0.3	1.0	1.2	1.0	2.2	20.1	25.1	22.2
December	* 0.6	* 0.3	* 0.9	1.1	* 0.4	1.5	1.7	* 0.7	2.5	22.0	* 16.7	20.1
1995												
January	* 0.9	* 0.3	* 1.3	* 0.9	* 0.4	1.4	1.9	* 0.8	2.6	25.4	* 14.0	20.5
February	* 1.0	* 0.3	* 1.4	* 0.9	* 0.2	1.1	1.9	* 0.6	2.5	25.6	* 8.4	17.4
March	* 1.0	* 0.3	* 1.4	1.2	* 0.5	1.7	2.2	* 0.8	3.1	27.7	* 14.8	22.3
April	* 1.0	* 0.5	* 1.5	* 0.8	* 0.3	1.1	1.7	* 0.9	2.6	28.3	* 15.4	22.1
May	* 1.0	* 0.6	* 1.5	1.0	* 0.4	1.5	2.0	1.0	3.0	25.6	23.5	24.9
June	* 0.9	* 0.5	* 1.3	1.0	* 0.4	1.4	1.8	* 0.9	2.7	27.2	* 21.8	25.1
July	* 0.7	* 0.5	* 1.2	* 0.9	* 0.5	1.4	1.7	1.0	2.7	25.2	22.9	24.3
August	* 1.4	* 0.3	* 1.7	* 0.5	* 0.3	* 0.8	1.8	* 0.6	2.5	24.1	* 14.5	20.6

LONG TERM UNEMPLOYED AS A PROPORTION OF TOTAL UNEMPLOYED, ACT



LABOUR FORCE SUPPLEMENTARY TOPICS

Although emphasis in the population survey is placed on the regular collection of data on demographic and labour force characteristics, supplementary and special surveys of particular aspects of the labour force are carried out from time to time.

The principal results from the labour force supplementary surveys are released in *The Labour Force, Australia* (6203.0). Additional data are available as a Standard Data Service released at the same time, including tables formerly included in the supplementary publications. Equivalent tables at the State level are still available on microfiche. In addition, other unpublished data can be provided to meet special requirements.

Catalogue / Product no.	Title of Publication / Standard Data Service	Price (a) \$
6206.0.40.001*	Labour Force Experience, Australia, February 1995	17.50
6209.0	Labour Mobility, Australia, February 1994	13.00
6216.0.40.001*	Multiple Jobholding, Australia, August 1994	17.50
6220.0.40.001*	Persons Not in the Labour Force, Australia, September 1994	17.50
6222.0	Job Search Experience of Unemployed Persons, Australia, July 1994	13.00
6224.0.40.001*	Labour Force Status and Other Characteristics of Families, Australia, June 1995	17.50
6227.0	Transition from Education to Work, Australia, May 1994	18.00
6235.0	Labour Force Status and Educational Attainment, Australia, February 1994	13.00
6238.0.40.001*	Retirement and Retirement Intentions, Australia, November 1994	17.50
6243.0	Career Paths of Persons with Trade Qualifications, Australia, 1993	18.00
6245.0	Successful and Unsuccessful Job Search Experience, Australia, July 1994	13.00
6250.0	Labour Force Status and Other Characteristics of Migrants, Australia, September 1993	13.00
6254.0	Career Experience, Australia, February 1993	12.70
6264.0	Persons who had re-entered the Labour Force, Australia, May 1993	12.70
6265.0.40.001*	Underemployed Workers, Australia, September 1994	17.50
6267.0.40.001*	Persons Who Have Left the Labour Force, Australia, September 1994	17.50
6272.0.40.001*	Participation in Education, Australia, September 1994	17.50
6275.0	Persons Employed at Home Australia, March 1992	12.50
6277.0	Career Paths of Qualified Nurses, Australia, March to July 1989	12.50
6278.0	Training and Education Experience, Australia, 1993	30.00
6310.0.40.001*	Weekly Earnings of Employees (Distribution), Australia, August 1994	17.50
6317.0	Annual and Long Service Leave Taken, Australia, May 1988 to April 1989	11.50
6319.0	Superannuation, Australia, November 1993	13.00
6325.0.40.001*	Trade Union Members, Australia, August 1994	17.50
6334.0.40.001*	Employment Benefits, Australia, August 1994	17.50
6342.0	Working Arrangements, Australia, August 1993	13.00

(a) Prices quoted are subject to revision.

* Standard Data Service

Recent issues of *The Labour Force, Australia* contain the principal results of the following supplementary surveys:

June 1995 issue

- Labour Force Experience, Australia, February 1995

August 1995 issue

- Labour Force Status and Other Characteristics of Families, Australia, June 1995

EXPLANATORY NOTES

INTRODUCTION

1 This publication contains estimates of the civilian labour force derived from the labour force survey component of the monthly population survey, which is conducted on a sample basis throughout Australia.

THE POPULATION SURVEY

2 This survey consists of the labour force survey (LFS) and, in most months, one or more supplementary topics. The survey is based on a multi-stage area sample of private dwellings (houses, flats, etc.) and non-private dwellings (hotels, motels, etc.) and covers slightly less than 0.5% of the population of New South Wales. The information is obtained from the occupants of selected dwellings by carefully chosen and specially trained interviewers. The interviews are generally conducted during the two weeks beginning on the Monday between the 6th and 12th of each month. The information obtained relates to the week before the interview (i.e. the reference week).

SCOPE

3 The labour force survey includes all persons aged 15 years and over, except:

- (a) members of the permanent defence forces;
- (b) certain diplomatic personnel of overseas governments, customarily excluded from census and estimated populations;
- (c) overseas residents in Australia; and
- (d) members of non-Australian defence forces (and their dependants) stationed in Australia.

SURVEY SAMPLE REDESIGN

4 Following each Population Census, the ABS redesigns and reselects the LFS to take into account the new information which is obtained from the Census. The sample used in the LFS from September 1987 to August 1992, which was designed and selected using data from the 1986 Census, has been updated and reselected using information collected in the 1991 Census. The new sample was phased in over the period September 1992 to December 1992.

5 For the most part, one quarter of the new sample was introduced each month so that, by December 1992, the entire new sample was in place.

POTENTIAL EFFECTS ON LABOUR FORCE SURVEY ESTIMATES

6 Implications for estimates produced from the LFS due to sample redesign and its implementation are as follows.

- (a) The sampling error overall increased initially by about 7% over the previous level but will decline gradually during the life of the new sample. For State estimates, the initial increase was about 8%, while for the Territories, there was a decrease of 19%. There were also higher standard errors for movements produced over the period September 1992 to December 1992 compared with those for the corresponding series produced prior to this period and from January 1993 onwards. Overall, these were estimated to be up to 20% higher than the normal standard errors on monthly movements.
- (b) Analysis has shown that the unemployment rate is marginally higher (less than 0.5 percentage points on average) for those persons in sample for the first time. Normally, this will not affect the overall estimates of month-to-month movements because the number of persons in the sample does not change significantly. However, during the transition period, there were twice as many people as

usual in the sample for the first time. This may have caused a small upward movement (of less than 0.1 percentage points on average) in the unemployment rate from August 1992 to September 1992 and a compensating decrease from December 1992 to January 1993.

7 For further information, see *Information Paper: Labour Force Survey Sample Design* (6269.0).

DEFINITIONS

8 The labour force category to which a person is assigned depends on the actual activity undertaken during the reference week (i.e. whether working, looking for work, etc.). The following definitions, which conform closely to the international standard definitions specified by the International Labour Office (ILO), relate only to those persons within the scope of the survey.

9 *Employed persons* comprise all civilians aged 15 years and over who, during the reference week:

- (a) worked for one hour or more for pay, profit, commission or payment in kind (including employees, employers and self-employed persons) in a job or business, or on a farm; or
- (b) worked for one hour or more without pay in a family business or on a farm (i.e. unpaid family helpers); or
- (c) were employees who had a job but were not at work and were: on paid leave; on leave without pay for less than four weeks up to the end of the reference week; stood down without pay because of bad weather or plant breakdown at their place of employment for less than four weeks up to the end of the reference week; on strike or locked out; on workers' compensation and expected to be returning to their job; or receiving wages or salary while undertaking full-time study; or
- (d) were employers, self-employed persons or unpaid family helpers who had a job, business or farm, but were not at work.

10 Prior to April 1986, unpaid family helpers who worked for 1 to 14 hours were excluded from the category of employed persons.

11 Employed persons can be classified into:

- (a) *full-time workers* (i.e. those who usually worked 35 hours or more a week (in all jobs) and others who, although usually part-time workers, worked 35 hours or more during the reference week); and
- (b) *part-time workers* (i.e. those who usually worked less than 35 hours a week and who did so during the reference week).

12 *Unemployed persons* are all those aged 15 years and over who were not employed during the reference week, and:

- (a) had actively looked for full-time or part-time work at any time in the four weeks up to the end of the reference week, and:
 - (i) were available for work in the reference week, or would have been available except for temporary illness (i.e. lasting for less than four weeks to the end of the reference week); or
 - (ii) were waiting to start a new job within four weeks from the end of the reference week and would have started in the reference week if the job had been available then; or

(b) were waiting to be called back to a full-time or part-time job from which they had been stood down without pay for less than four weeks up to the end of the reference week (including the whole of the reference week) for reasons other than bad weather or plant breakdown.

13 *Actively looking for work* includes writing, telephoning or applying in person to an employer for work; answering a newspaper advertisement for a job; checking factory or Commonwealth Employment Service notice-boards; being registered with the Commonwealth Employment Service; checking or registering with any other employment agency; advertising or tendering for work; and contacting friends or relatives.

14 *The unemployment rate* for any group is the number unemployed expressed as a percentage of the labour force (i.e. employed plus unemployed) in the same group.

15 The *labour force* comprises all persons who, during the reference week, were employed or unemployed as defined above.

16 *Long term unemployed* comprises persons unemployed for a period of 52 weeks or more.

17 *Persons not in the labour force* are those who, during the reference week, were not in the categories *employed* or *unemployed* as defined above.

18 *The labour force participation rate* for any group is the labour force expressed as a percentage of the civilian population aged 15 years and over in the same group.

19 *Duration of unemployment* is the period from the time the person began looking for work or was stood down to the end of the reference week.

20 *Unemployed persons classified by industry and occupation.* Unemployed persons who had worked full-time for two weeks or more in the last two years are classified according to the industry and occupation of their most recent full-time job.

21 *Industry classification.* From August 1994, Labour Force Survey industry data are classified according to the *Australian and New Zealand Standard Industrial Classification (ANZSIC) 1993 (1292.0)*. For further information about the application of ANZSIC to Labour Force Survey data, see *Information Paper Labour Force Survey: Introduction of ANZSIC for industry data (6259.0)*.

22 *Occupation classification.* Occupation data are presented in accordance with the *Australian Standard Classification of Occupations (ASCO) (1221.0 and 1222.0)*.

23 *Marital status.* In the labour force survey, persons are classified as *married* or *not married*. Persons are classified as *married* if they are reported as being married (including de facto) and their spouse was a usual resident of the household at the time of the survey.

24 *Persons attending school or a tertiary educational institution.* Persons attending school comprise those aged 15–19 years who, during the reference week, were enrolled full-time at secondary or high schools (including boarding school pupils). Persons attending a tertiary educational institution comprise those aged 15–24 years who were enrolled full-time at universities, colleges of advanced

education, technical colleges, colleges of technical and further education, and theological colleges.

25 *Employment/population ratio.* For any group, the number of employed persons expressed as a percentage of the civilian population aged 15 years and over in the same group.

STATISTICAL AREAS

26 The regional structure for NSW used in tables 16–19 is based on the Statistical Region structure of the Australian Standard Geographical Classification (ASGC). For further information concerning statistical areas, please refer to pages 48–50 and the publications *Regional Statistics, New South Wales* (1304.1) and *Australian Standard Geographical Classification* (1216.0).

SEASONAL ADJUSTMENT AND TREND ESTIMATION

27 Seasonal adjustment is a means of removing the estimated effects of normal seasonal variation from the series so that the effects of other influences on the series can be more clearly recognised. Seasonal adjustment does not aim to remove the irregular or non-seasonal influences which may be present in any particular month. This means that month-to-month movements of the seasonally adjusted estimates may not be reliable indicators of trend behaviour. For example, irregular factors unrelated to the trend account for more than half the seasonally adjusted movement with the following frequency:

- (a) Employment: 5 in 10 monthly movements
- (b) Unemployment: 7 in 10 monthly movements
- (c) Unemployment rate: 7 in 10 monthly movements
- (d) Participation rate: 9 in 10 monthly movements

28 Smoothing seasonally adjusted series produces a measure of the underlying trend by reducing the impact of the irregular component of the series. The trend estimates are derived by applying a 13-term Henderson-weighted moving average to the respective seasonally adjusted series. While this smoothing technique enables estimates to be produced which include the latest month, it does result in revisions to the most recent months as additional observations become available.

29 Seasonally adjusted series for NSW appear in this publication in Table 2. Trend estimates for NSW and ACT appear in Tables 2 and 21 respectively. Seasonally adjusted data is not available for ACT.

RELIABILITY OF THE ESTIMATES

30 Estimates in this publication are subject to sampling and non-sampling errors. The Technical Note on pages 47–52 of this publication gives information on these sources of error.

RELATED PUBLICATIONS

31 Users may also wish to refer to the following related publications which are available from the ABS Bookshop:

- *Regional Statistics, New South Wales* (1304.1) issued annually
- *Australian Capital Territory Business Indicators* (1303.8) issued monthly
- *Australian Capital Territory Statistical Summary* (1307.8) issued annually
- *Australian Capital Territory at a Glance* (1314.8) issued annually
- *A Guide to Smoothing Time Series — Estimates of 'Trend'* (1316.0)

- *Time Series Decomposition — An Overview* (1317.0)
- *Labour Statistics, Australia* (6101.0) issued annually
- *A Guide to Labour Statistics* (6102.0)
- *The Labour Force, Australia, Preliminary* (6202.0) issued monthly
- *The Labour Force, Australia* (6203.0) issued monthly
- *Employed Wage and Salary Earners, Australia* (6248.0) issued quarterly
- *Information Paper: Labour Force Survey: Introduction of ANZSIC for Industry Data* (6259.0)
- *Information Paper: Labour Force Survey — Sample Design* (6269.0)
- *Information Paper: Labour Force Survey — Measuring Teenage Unemployment* (6270.0)
- *Technical Paper: The Labour Force, Australia: Preliminary Data on Floppy Disk — Technical Details* (6271.0)

ADDITIONAL DATA

32 In addition to the labour force survey, the ABS publishes a wide range of supplementary labour market information. For details see page 39 of this publication.

33 The ABS can also make available information which is not published. This information may be made available in one or more of the following forms: microfiche, photocopy, data tape, floppy disk, computer printout, clerically-extracted tabulation. In general, a charge is made for providing unpublished information.

SYMBOLS AND OTHER USAGES

A	Area
C	City
MSR	Major Statistical Region
n.e.c.	not elsewhere classified
SD	Statistical Division
SR	Statistical Region
SRS	Statistical Region Sector
*	subject to sampling variability too high for most practical purposes. See paragraph 6 of the Technical Note on Data Reliability.
—	nil or rounded to zero (including null cells)

34 Figures have been rounded and discrepancies may occur between sums of the component items and the totals shown.

TECHNICAL NOTE ON DATA RELIABILITY

SOURCES OF ERROR

1 There are a number of possible sources of error in sample surveys and these can be classified into two types: *sampling error*; and *non-sampling error*.

NON-SAMPLING ERRORS

2 Non-sampling errors may arise as a result of errors in the reporting, recording or processing of the data and can occur even if there is a complete enumeration of the population. Non-sampling errors can be introduced through: inadequacies in the questionnaire; non-response; inaccurate reporting by respondents; errors in the application of survey procedures; incorrect recording of answers; and errors in data entry and processing.

3 It is difficult to measure the size of the non-sampling errors and the extent of these errors could vary considerably in significance from survey to survey, and from question to question. However, every effort is made in the design of the survey and development of survey procedures to minimise the effect of these errors.

SAMPLING ERRORS

4 Sampling error is the error which occurs by chance because the data were only obtained from a sample, not the entire population.

Standard error of estimates

5 One measure of the variability of estimates which occurs as a result of surveying only a sample of the population is the *standard error* (SE). There are about 2 chances in 3 that a survey estimate is within one standard error of the figure that would have been obtained if all persons had been included and about 19 chances in 20 that it is within two standard errors. That is, there are 19 chances in 20 that the true estimate is in the range—

$$X - 2 \times SE(X) \text{ to } X + 2 \times SE(X)$$

(where X is the estimate)

The standard error of an estimate can be obtained from Table A. Linear interpolation should be used to calculate the standard error of estimates falling between the sizes of estimates listed in the table (see example below Table A).

6 In the tables in this publication, only estimates with relative standard errors of 25% or less, and percentages based on such estimates, are considered sufficiently reliable for most purposes. However, estimates and percentages with larger relative standard errors have been included and are preceded by an asterisk (e.g. * 3.4) to indicate they are subject to high standard errors and should be used with caution.

7 The standard error can also be expressed as a percentage of the estimate and this is known as the *relative standard error* (RSE). The RSE is determined by dividing the standard error of an estimate $SE(X)$ by the estimate X and expressing it as a percentage. That is,

$$RSE(X) = \frac{SE(X) \times 100}{X}$$

(where X is the estimate)

8 The look up list on the following page provides a guide for the calculation of standard errors and relative standard errors for a range of statistics.

CALCULATING STANDARD ERRORS

The methods described below refer to the calculation of standard errors for NSW estimates. Standard errors of ACT estimates should be calculated from Table C, using column 2 (from September 1992) instead of Table A and column 3 (Monthly movements for December 1992-January 1993 onwards) instead of Table B.

<i>Measure of reliability to be determined</i>	<i>Method</i>
Standard errors of estimates of employed persons.	Determine the SE from Table A directly.
Standard errors of estimates of unemployed persons.	Multiply the SE from Table A by 1.06.
Standard errors of estimates of persons not in the labour force.	Multiply the SE from Table A by 1.1.
Standard errors of rates (e.g. the unemployment rate which is based on the number of unemployed persons expressed as a percentage of the number of persons in the labour force).	Determine the RSE of the numerator (X) and the denominator (Y) then apply the following formula. $RSE(X/Y) = \sqrt{[RSE(X)]^2 - [RSE(Y)]^2}$
Standard error of average duration of unemployment.	Determine the RSE for the number of persons on which the average is based and multiply this by 1.3.
Standard error of median duration of unemployment.	Determine the RSE for the number of persons on which the average is based and multiply this by 2.0.
Standard error of monthly movements.	Using Table B, look up the SE of the larger estimate.
Standard error of quarterly movements.	Determine the standard error of the larger estimate (using Table A) and multiply this by 1.11.
Standard error of annual movements.	Determine the standard error of the larger estimate (using Table A) and multiply this by 1.3.

LINEAR INTERPOLATION

9 Linear interpolation is used to determine the standard error of an estimate which falls between two values listed in the *size of estimate* column in Tables A or B. Linear interpolation is best described using an example. In August 1995, there were 639 600 (X_e) employed persons working part-time in New South Wales. This estimate falls between the values 500 000 (X_l) and 1 000 000 (X_u) in Table A.

10 The standard error of the estimate is determined as follows. Firstly calculate

$$\begin{aligned} F &= \frac{X_e - X_l}{X_u - X_l} \\ &= \frac{639\,600 - 500\,000}{1\,000\,000 - 500\,000} \\ &= 0.28 \end{aligned}$$

11 Secondly, calculate the standard error of the estimate, $SE(X_e)$ thus:

$$\begin{aligned} SE(X_e) &= SE(X_l) + \left(F \times [SE(X_u) - SE(X_l)] \right) \\ &= 8\,800 + (0.28 \times [11\,300 - 8\,000]) \\ &= 9\,500 \end{aligned}$$

12 Therefore the standard error of the number of employed persons in August 1995 working part-time in New South Wales (639 600) is 9 500.

TABLE A. STANDARD ERRORS OF ESTIMATES, REGIONS OF NSW FROM SEPTEMBER 1992 (a)

	Regions in Sydney (MSR)							
Size of estimate	NSW; Sydney (MSR); Balance of NSW (MSR)	Inner Sydney and Inner Western Sydney (SRs)	Inner Sydney (SR)	Eastern Suburbs (SR)	St George - Sutherland (SR)	Canterbury-Bankstown (SR)	Fairfield-Liverpool and Outer South Western Sydney (SRs)	Fairfield-Liverpool (SR)
500	420	340	330	300	300	280	330	290
1,000	590	500	480	430	430	410	470	410
3,000	1,000	890	860	770	780	740	850	750
5,000	1,300	1,150	1,150	1,000	1,050	970	1,100	980
10,000	1,750	1,700	1,650	1,500	1,500	1,400	1,650	1,450
20,000	2,400	2,450	2,450	2,200	2,200	2,100	2,350	2,100
50,000	3,550	4,050	4,050	3,650	3,700	3,500	3,850	3,500
100,000	4,750	5,900	6,000	5,400	5,500	5,200	5,600	5,200
200,000	6,200	8,600	8,900	8,000	8,100	7,700	8,200	7,700
300,000	7,300	10,700	11,300	10,100	10,200	9,700	10,200	9,800
500,000	8,800	14,200	15,200	13,600	13,800	13,000	13,500	13,100
1,000,000	11,300							
2,000,000	14,300							
5,000,000	19,300							

	Regions in Sydney (MSR) continued							
	Central Western Sydney (SR)	Outer Western Sydney (SR)	Blacktown Baulkham Hills (SR)	Lower Northern Sydney (SR)	Hornsby-Ku-ring-gai (SR)	Northern Beaches (SR)	Gosford Wyong (SR)	
500	300	310	270	360	320	250	330	
1,000	440	450	390	520	460	360	470	
3,000	790	820	700	940	830	650	850	
5,000	1,050	1,100	920	1,250	1,100	860	1,150	
10,000	1,500	1,550	1,350	1,800	1,600	1,250	1,650	
20,000	2,250	2,300	1,950	2,650	2,350	1,850	2,400	
50,000	3,750	3,850	3,300	4,450	3,900	3,100	4,050	
100,000	5,500	5,700	4,850	6,500	5,800	4,550	6,000	
200,000	8,200	8,500	7,200	9,700	8,600	6,800	8,900	
300,000	10,300	10,700	9,100	12,300	10,900	8,500	11,200	

	Regions in Balance of NSW (MSR)							
	Hunter (SR)	Newcastle (SRs)	Illawarra and South Eastern (SRs)	Illawarra (SR)	Wollongong (SRs)	Richmond-Tweed and Mid-North Coast (SRs)	Northern, Far West-North Western and Central West (SRs)	Murray Murrumbidgee (SR)
500	350	330	330	310	270	370	360	360
1,000	500	480	480	450	390	530	520	520
3,000	900	870	870	810	710	950	940	940
5,000	1,200	1,150	1,150	1,050	940	1,250	1,250	1,250
10,000	1,700	1,650	1,650	1,550	1,350	1,850	1,800	1,800
20,000	2,500	2,450	2,400	2,250	2,000	2,700	2,650	2,650
50,000	4,100	4,100	3,950	3,700	3,350	4,500	4,450	4,400
100,000	6,000	6,000	5,700	5,400	4,950	6,600	6,600	6,500
200,000	8,700	9,000	8,400	7,800	7,300	9,900	9,800	9,700
300,000	10,900	11,300	10,400	9,800	9,300	12,400	12,300	12,300

(a) For standard errors for earlier periods, see previous issues of this publication.

TABLE B. STANDARD ERRORS OF MONTH TO MONTH MOVEMENTS, REGIONS OF NSW
FROM DECEMBER 1992-JANUARY 1993 ONWARDS (a)

Size of estimate	Regions in Sydney (MSR)							
	NSW: Sydney (MSR): Balance of NSW (MSR)	Inner Sydney and Inner Western Sydney (SRs)	Inner Sydney (SR)	Eastern Suburbs (SR)	St George- Sutherland (SR)	Canterbury- Banksstown (SR)	Fairfield- Liverpool and OuterSize South Western Sydney (SRs)	Fairfield- Liverpool (SR)
500	540	330	270	260	240	240	290	220
1,000	690	440	360	350	330	330	390	300
3,000	1,050	700	600	580	540	540	630	500
5,000	1,250	870	750	730	680	680	780	630
10,000	1,600	1,150	1,050	990	930	930	1,050	860
20,000	2,050	1,550	1,400	1,350	1,250	1,250	1,400	1,150
50,000	2,900	2,300	2,150	2,050	1,950	1,900	2,050	1,750
100,000	3,700	3,100	2,900	2,800	2,650	2,650	2,800	2,400
200,000	4,750	4,200	4,000	3,850	3,600	3,600	3,750	3,300
300,000	5,500	5,000	4,800	4,600	4,350	4,300	4,400	4,400
500,000	6,700	6,200	6,000	5,800	5,400	5,400	5,500	5,000
1,000,000	8,600							
2,000,000	11,100							
5,000,000	15,500							
Size of estimate	Regions in Sydney (MSR) continued							Gosford- Wyong (SR)
	Central Western Sydney (SR)	Outer Western Sydney (SR)	Blacktown- Baulkham Hills (SR)	Lower Northern Sydney (SR)	Hornsby- Ku-ring-gai (SR)	Northern Beaches (SR)		
500	220	240	250	290	230	210		270
1,000	300	330	340	400	310	280		380
3,000	490	540	560	660	510	470		620
5,000	610	680	700	830	640	590		780
10,000	840	940	960	1,150	870	800		1,050
20,000	1,150	1,300	1,300	1,550	1,200	1,100		1,450
50,000	1,750	1,950	2,000	2,350	1,800	1,650		2,200
100,000	2,350	2,650	2,700	3,200	2,450	2,250		3,000
200,000	3,250	3,600	3,700	4,400	3,400	3,100		4,100
300,000	3,900	4,350	4,450	5,300	4,050	3,750		4,950
Size of estimate	Regions in Balance of NSW (MSR)							
	Hunter (SR)	Newcastle (SRs)	Illawarra and South Eastern (SRs)	Illawarra (SR)	Wollongong (SRs)	Richmond- Tweed and Mid-North Coast (SRs)	Northern, Far West-North Western and Central West (SRs)	Murray- Murrumbidgee (SR)
500	320	280	340	340	260	300	340	290
1,000	430	390	460	460	350	420	470	400
3,000	690	640	740	730	580	680	760	660
5,000	860	800	910	910	730	860	960	830
10,000	1,150	1,100	1,250	1,200	990	1,200	1,300	1,150
20,000	1,550	1,500	1,650	1,650	1,350	1,600	1,800	1,550
50,000	2,300	2,250	2,450	2,400	2,050	2,450	2,750	2,350
100,000	3,100	3,100	3,250	3,250	2,800	3,350	3,750	3,200
200,000	4,150	4,250	4,400	4,350	3,850	4,550	5,100	4,350
300,000	4,900	5,100	5,200	5,200	4,600	5,500	6,100	5,200

(a) For standard errors for earlier periods, see previous issues of this publication.

TABLE C. STANDARD ERRORS OF ESTIMATES, ACT

<i>Size of estimate</i>	<i>From September 1992 (a)</i>	<i>Monthly movements for December 1992– January 1993 onwards (a)</i>
500	180	150
1,000	240	220
3,000	390	320
5,000	490	390
10,000	640	500
20,000	840	640
50,000	1,200	900
100,000	1,550	1,150
200,000	1,950	1,500
300,000	2,250	1,750

(a) For standard errors for earlier periods, see *The Labour Force, Australia* (6203.0)

APPENDIX. REGIONS OF NSW AND THEIR STATISTICAL LOCAL AREAS

SYDNEY (MSR)

Inner Sydney and Inner Western Sydney (SRs)	Ashfield (A) Botany (A) Burwood (A) Concord (A) Drummoyne (A) Leichhardt (A) Marrickville (A) South Sydney (C) Strathfield (A) Sydney (C) — Inner Sydney (C) — Remainder
Inner Sydney (SR)	Botany (A) Leichhardt (A) Marrickville (A) South Sydney (C) Sydney (C) — Inner Sydney (C) — Remainder
Eastern Suburbs (SR)	Randwick (C) Waverley (A) Woollahra (A)
St George—Sutherland (SR)	Hurstville (C) Kogarah (A) Rockdale (A) Sutherland Shire (A)
Canterbury—Bankstown (SR)	Bankstown (C) Canterbury (A)
Fairfield—Liverpool and Outer South Western Sydney (SRs)	Camden (A) Campbelltown (C) Fairfield (C) Liverpool (C) Wollondilly (A)
Fairfield—Liverpool (SR)	Fairfield (C) Liverpool (C)
Central Western Sydney (SR)	Auburn (A) Holroyd (C) Parramatta (C)
Outer Western Sydney (SR)	Blue Mountains (C) Hawkesbury (C) Penrith (C)
Blacktown—Baulkham Hills (SR)	Baulkham Hills (A) Blacktown (C)
Lower Northern Sydney (SR)	Hunter's Hill (A) Lane Cove (A) Mosman (A) North Sydney (A) Ryde (C) Willoughby (C)

Hornsby-Ku-ring-gai (SR)	Hornsby (A) Ku-ring-gai (A)
Northern Beaches (SR) ¹	Manly (A) Pittwater (A) Warringah (A)
Gosford-Wyong (SR)	Gosford (C) Wyong (A)
BALANCE OF NSW (MSR)²	
Hunter (SR)	Cessnock (C) Dungog (A) Gloucester (A) Great Lakes (A) Lake Macquarie (C) Maitland (C) Merriwa (A) Murrurundi (A) Muswellbrook (A) Newcastle (C) — Inner Newcastle (C) — Remainder Port Stephens (A) Scone (A) Singleton (A)
Newcastle (SRS)	Cessnock (C) Lake Macquarie (C) Maitland (C) Newcastle (C) — Inner Newcastle (C) — Remainder Port Stephens (A)
Illawarra and South Eastern (SRs)	Bega Valley (A) Bombala (A) Boorowa (A) Cooma-Monaro (A) Crookwell (A) Eurobodalla (A) Goulburn (C) Gunning (A) Harden (A) Kiama (A) Mulwaree (A) Queanbeyan (C) Shellharbour (A) Shoalhaven (C) Snowy River (A) Tallaganda (A) Wingecarribee (A) Wollongong (C) Yarrawlumla (A) Yass (A) Young (A)

Illawarra (SR)

Kiama (A)
Shellharbour (A)
Shoalhaven (C)
Wingecarribee (A)
Wollongong (C)

Wollongong (SRS)

Kiama (A)
Shellharbour (A)
Wollongong (C)

Richmond-Tweed and
Mid-North Coast (SRs)

Ballina (A)
Bellingen (A)
Byron (A)
Casino (A)
Coffs Harbour (C)
Copmanhurst (A)
Grafton (C)
Greater Taree (C)
Hastings (A)
Kempsey (A)
Kyogle (A)
Lismore (C)
Lord Howe Island
Maclean (A)
Nambucca (A)
Nymboida (A)
Richmond River (A)
Tweed (A) — Part A
Tweed (A) — Part B
Ulmarra (A)

Northern, Far West-North Western
and Central West (SRs)²

Armidale (C)
Barraba (A)
Bathurst (C)
Bingara (A)
Bland (A)
Blayney (A) — Part A
Blayney (A) — Part B
Bogan (A)
Bourke (A)
Brewarrina (A)
Cabonne (A) — Part A
Cabonne (A) — Part B
Cabonne (A) — Part C
Cobar (A)
Coolah (A)
Coonabarabran (A)
Coonamble (A)
Cowra (A)
Dubbo (C)
Dumaresq (A)
Evans (A) — Part A
Evans (A) — Part B
Forbes (A)
Gilgandra (A)
Glen Innes (A)
Greater Lithgow (C)
Gunnedah (A)
Guyra (A)
Inverell (A) — Part A
Inverell (A) — Part B
Lachlan (A)
Manilla (A)

Northern, Far West–North Western
and Central West (SRs)²
—continued

Moree Plains (A)
Mudgee (A)
Narrabri (A)
Narromine (A)
Nundle (A)
Oberon (A)
Orange (C)
Parkes (A)
Parry (A)
Quirindi (A)
Rylstone (A)
Severn (A)
Tamworth (C)
Tenterfield (A)
Uralla (A)
Walcha (A)
Walgett (A)
Warren (A)
Weddin (A)
Wellington (A)
Yallaroi (A)

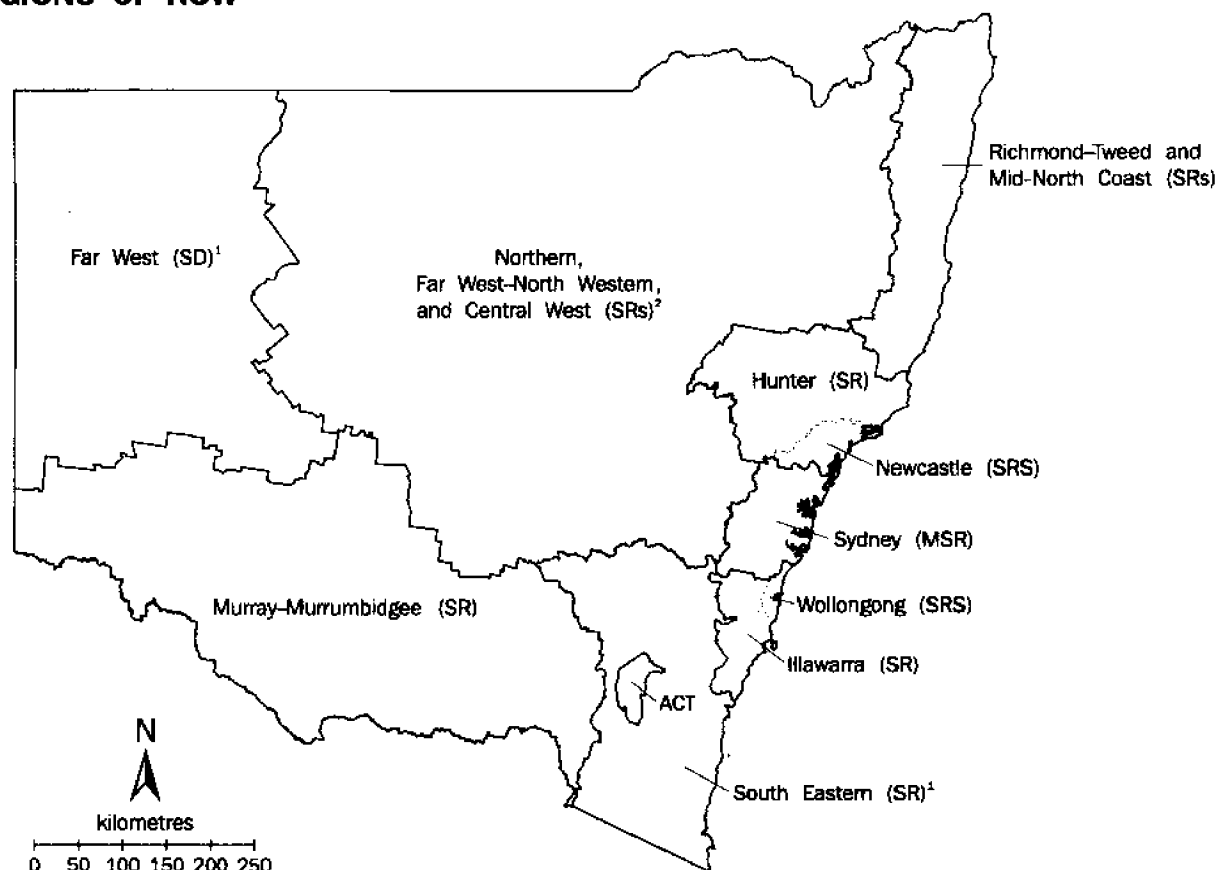
Murray–Murrumbidgee (SR)

Albury (C)
Balranald (A)
Berrigan (A)
Carrathool (A)
Conargo (A)
Coolamon (A)
Cootamundra (A)
Corowa (A)
Culcairn (A)
Deniliquin (A)
Griffith (C)
Gundagai (A)
Hay (A)
Holbrook (A)
Hume (A)
Jerilderie (A)
Junee (A)
Leeton (A)
Lockhart (A)
Murray (A)
Murrumbidgee (A)
Narrandera (A)
Temora (A)
Tumbarumba (A)
Tumut (A)
Urana (A)
Wagga Wagga (C)
Wakool (A)
Wentworth (A)
Windouran (A)

¹ Previously Manly–Warringah (SR).

² The statistical local areas which comprise Far West (SD) — Broken Hill (C), Central Darling (A), and Unincorporated Far West — are included in Balance of NSW (MSR), but excluded from Northern, Far West–North Western and Central West (SRs).

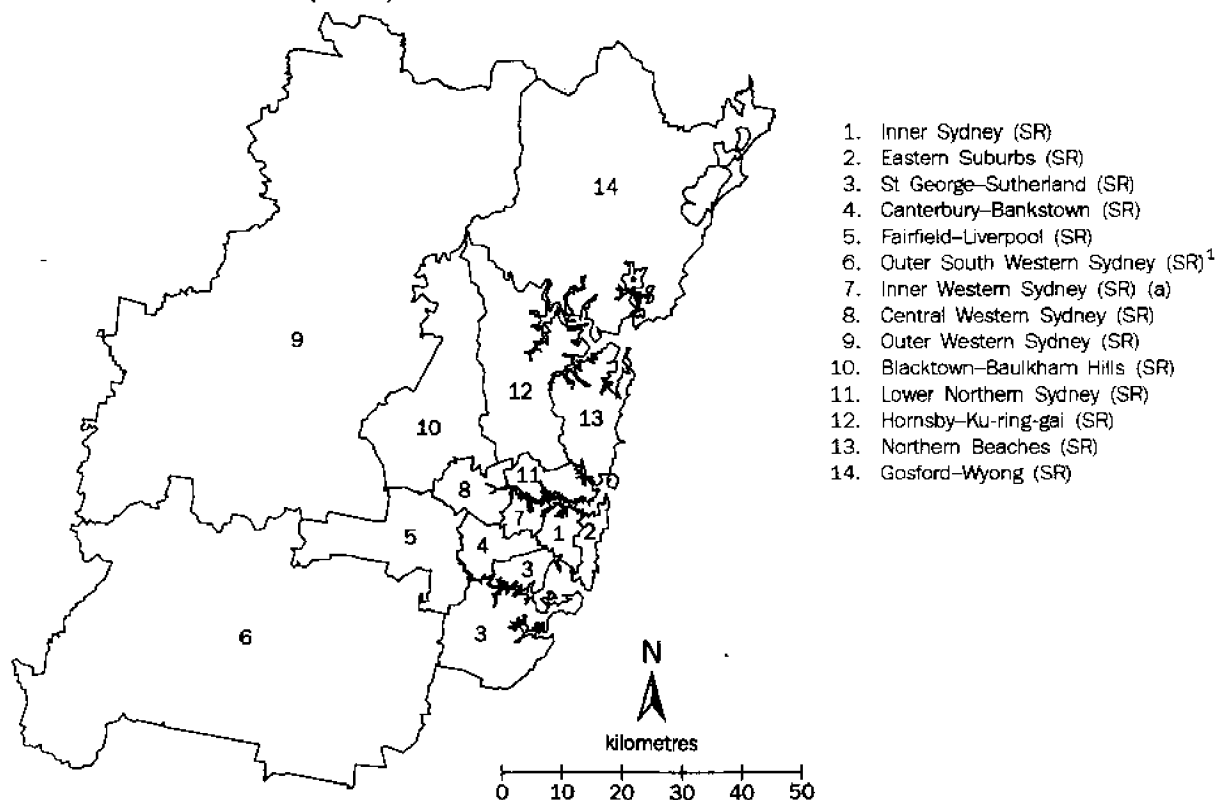
REGIONS OF NSW



¹ Not published separately.

² Excludes Far West (SD).

REGIONS OF SYDNEY (MSR)



¹ Not published separately.

For more information ...

The ABS publishes a wide range of statistics and other information on Australia's economic and social conditions. Details of what is available in various publications and other products can be found in the *ABS Catalogue of Publications and Products* available at all ABS Offices (see below for contact details).

Information Consultancy Service

Information tailored to special needs of clients can be obtained from the Information Consultancy Service available at ABS Offices (see Information Inquiries below for contact details).

National Dial-a-Statistic Line

0055 86 400

(Steadycom P/L: premium rate 25c/21.4 secs.)

This number gives you 24 hour access, 365 days a year for a range of statistics.

Electronic Data Services

A large range of data is available via on-line services, diskette, magnetic tape, tape cartridge and CD ROM. For more details about these electronic data services, contact any ABS Office (see below).

Bookshops and Subscriptions

There is a large number of ABS publications available from ABS bookshops (see below Bookshop Sales for contact details). The ABS also provides a subscription service through which nominated publications are supplied by mail on a regular basis (telephone Subscription Service toll free on 008 02 0608 Australia wide).

Sales and Inquiries

Regional Offices	Information Inquiries	Bookshop Sales
SYDNEY (02)	268 4611	268 4620
MELBOURNE (03)	9615 7000	9615 7829
BRISBANE (07)	3222 6351	3222 6350
PERTH (09)	360 5140	360 5307
ADELAIDE (08)	237 7100	237 7582
HOBART (002)	205 800	205 800
CANBERRA (06)	207 0326	207 0326
DARWIN (089)	432 111	432 111
National Office		
ACT (06)	252 6007	008 020 608

ABS Email Addresses

Keylink	STAT.INFO/ABS
X.400	(C:AU,A:TELEMEMO,O:ABS,SN:INFO,FN:STAT)
Internet	STAT.INFO@ABS.TELEMEMO.AU



Information Services, ABS, GPO Box 796, Sydney NSW 2001
or any ABS office



2620110008956

ISSN 1322-0179

Recommended retail price: \$18.00